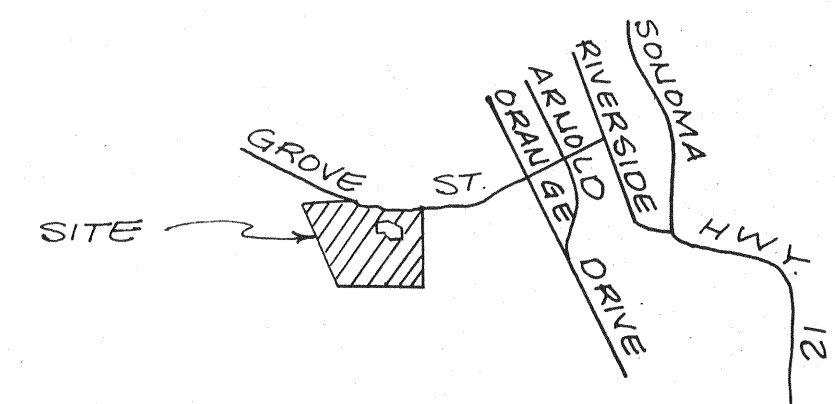
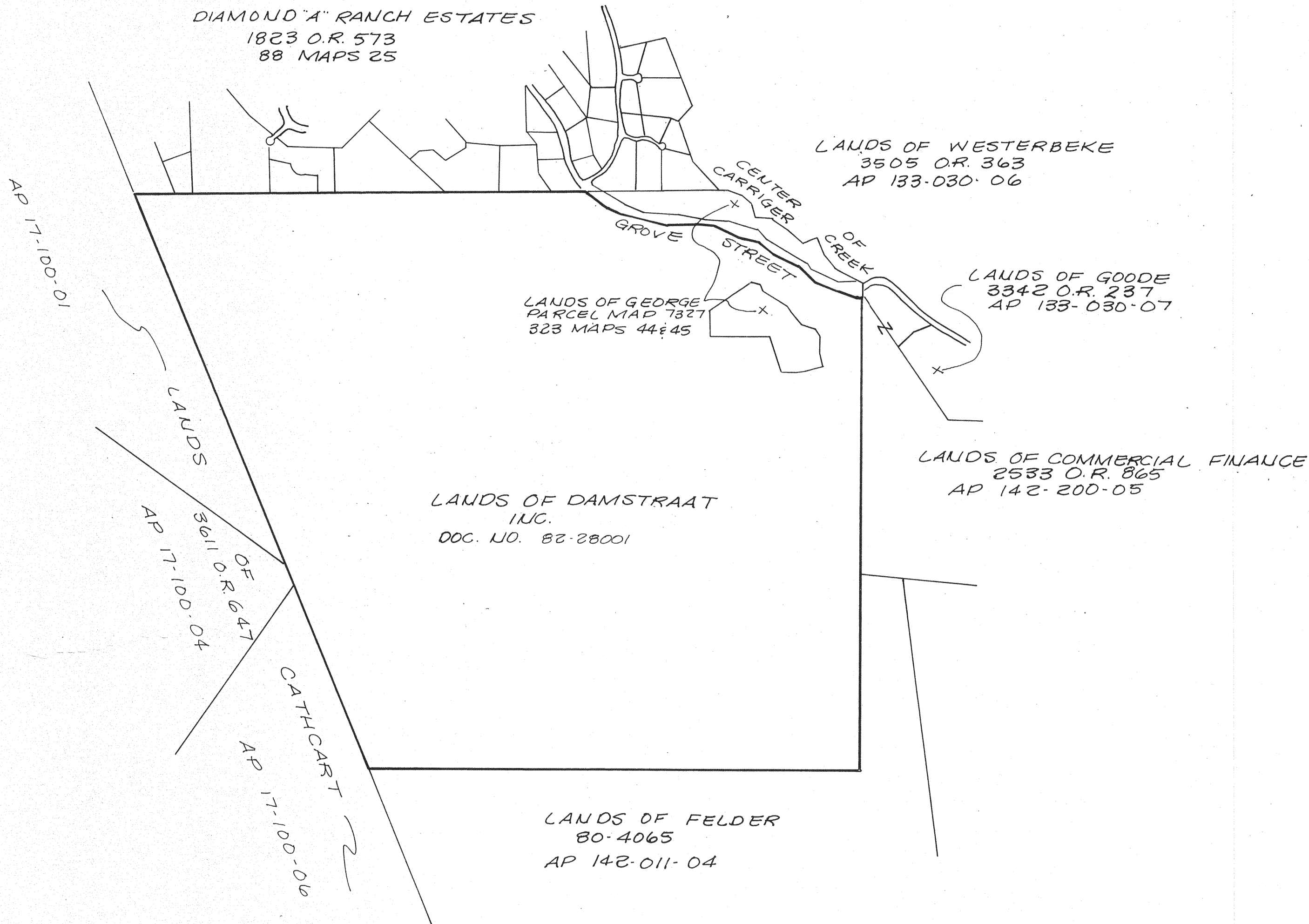


P.R.A.C. NOTES

1. AGRICULTURAL USES OCCUR IN THIS AREA AND ARE CONSISTENT WITH THE SONOMA COUNTY GENERAL PLAN. PESTICIDE SPRAYING ASSOCIATED WITH THE AGRICULTURAL USES MAY OCCUR.
2. THE GENERAL PLAN ADOPTED JANUARY 1978 DOES NOT ALLOW FURTHER DIVISIONS OF THESE PARCELS SHOWN HEREON. FUTURE DIVISIONS ARE SUBJECT TO THE GENERAL PLAN IN EFFECT AT THAT TIME.



LOCATION MAP

NO SCALE

SCALE: 1" = 1000'

TRACT No. 609
PHASE I
THE GEORGE RANCH

BEING A SUBDIVISION OF A PORTION OF THE LANDS OF DAMSTRAAT INC., A CALIFORNIA CORPORATION (SONOMA COUNTY RECORDERS DOCUMENT NO. 82-28001 AS SHOWN ON THE RECORD OF SURVEY OF THE LANDS OF DAMSTRAAT INVESTORS, FILED IN 326 MAPS PG. 32 & 33. ALSO BEING A PORTION OF THE PETALUMA RANCHO, SONOMA COUNTY, CALIFORNIA BEING A PORTION OF A.P. No. 142-200-07

OBERKAMPER & ASSOCIATES
CIVIL ENGINEERS, INC.

SANTA ROSA, CALIFORNIA

160.865 'A'

SHEET 2 OF 3

JOB NO. 418-81