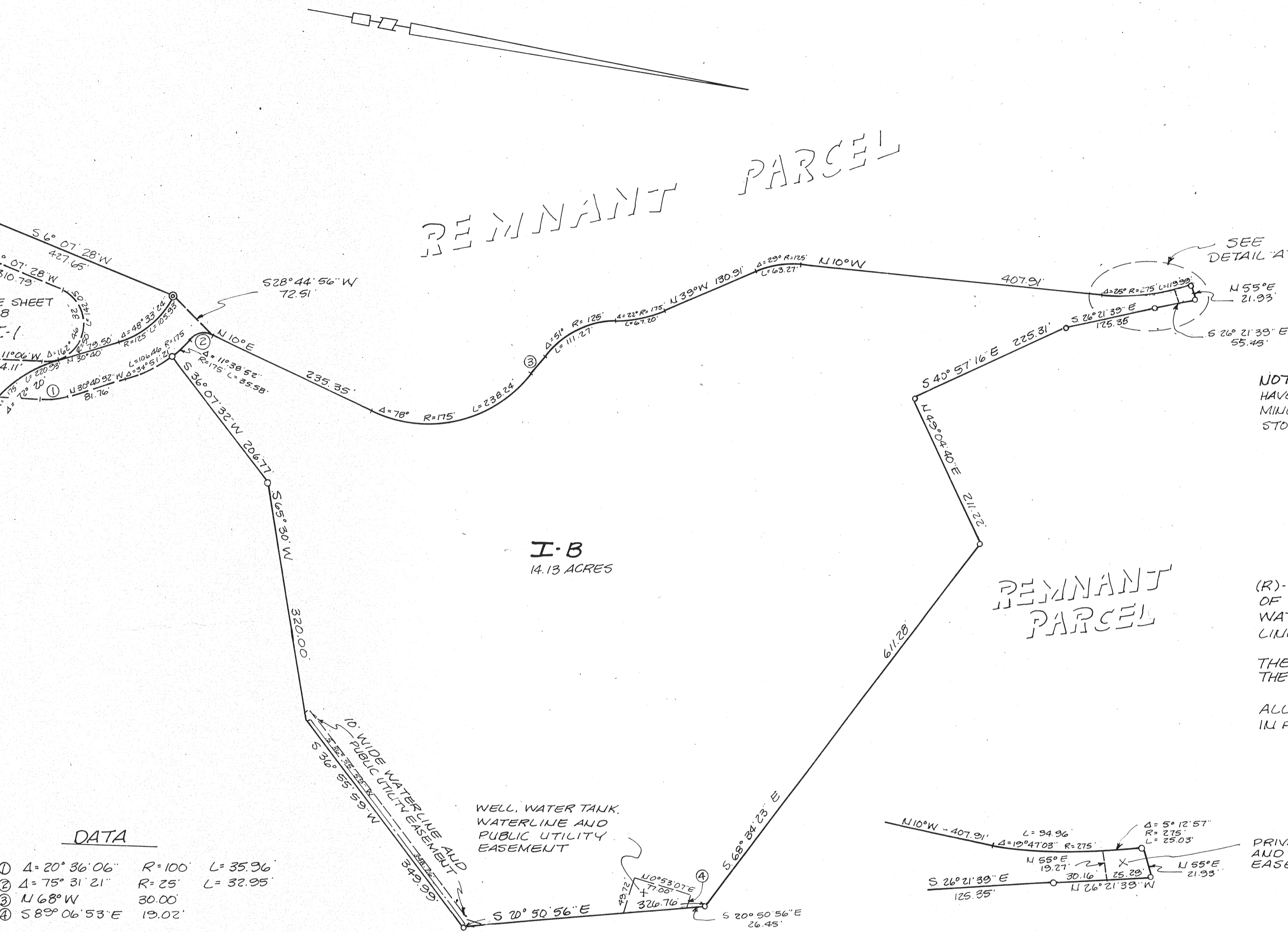


REMNANT PARCEL



**LEGEND**

NOTE: ALL CENTRAL ANGLES OF CURVES AND BEARINGS HAVE BEEN MEASURED TO THE NEAREST SECOND. WHERE MINUTES AND/OR SECONDS ARE NOT SHOWN, IT IS UNDERSTOOD THEY ARE ZERO. (i.e., N 84°E = N 84°00'00"E)

- SET 3/4" IRON PIPE R.C.E. 12034
- FOUND 3/4" IRON PIPE R.C.E. 12034 (UNLESS OTHERWISE NOTED)
- ⊙ SET 2" BRASS DISK IN A STD. 6" x 6" CONCRETE MONUMENT, TAGGED R.C.E. 12094

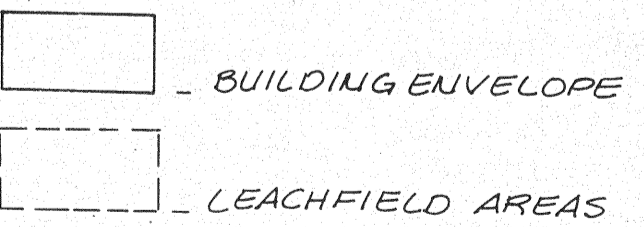
(R)- RADIAL; Δ- CENTRAL ANGLE; R- RADIUS; L- LENGTH OF CURVE; P.U.E.- PUBLIC UTILITY EASEMENT; W.L.E.- WATER LINE EASEMENT; B.S.L.- BUILDING SETBACK LINE

THE RED BORDER INDICATES THE BOUNDARIES OF THE LAND SUBDIVIDED BY THIS MAP

ALL DISTANCES AND DIMENSIONS SHOWN HEREON ARE IN FEET AND DECIMALS THEREOF.

**DATA**

- ① Δ= 20° 36' 06" R= 100' L= 35.96'
- ② Δ= 75° 31' 21" R= 25' L= 32.95'
- ③ N 68° W 30.00'
- ④ S 82° 06' 53" E 19.02'

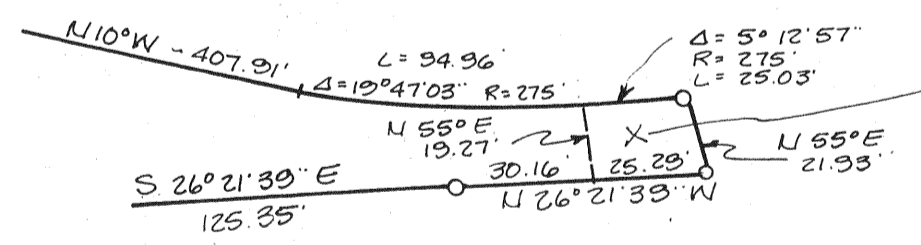


REMNANT PARCEL

I-B  
14.13 ACRES

**DETAIL "A"**

NO SCALE



PRIVATE ACCESS AND PUBLIC UTILITY EASEMENT

TRACT No. 609

PHASE I

THE GEORGE RANCH

BEING A SUBDIVISION OF A PORTION OF THE LAUDS OF DAMSTRAAT INC., A CALIFORNIA CORPORATION (SONOMA COUNTY RECORDERS DOCUMENT NO. 88-2800) AS SHOWN ON THE RECORD OF SURVEY OF THE LAUDS OF DAMSTRAAT INVESTORS, FILED IN 326 MAPS 32 & 33, ALSO BEING A PORTION OF THE PETALUMA RANCHO, SONOMA COUNTY, CALIFORNIA.

BEING A PORTION OF A.P. No. 142-200-07

**OBBERKAMPER & ASSOCIATES**  
CIVIL ENGINEERS, INC.  
SANTA ROSA, CALIFORNIA

SCALE: 1" = 100'

SHEET 4 OF 9

JOB NO. 418-81