

BENCHMARK:

U.S.G.S. DATUM ELEVATION: 757.86
 TOP OF 2" BRASS DISK SET IN 6"X6" CONCRETE
 MONUMENT ON THE WESTERLY BOUNDARY
 OF LOT I-1.

LEGEND

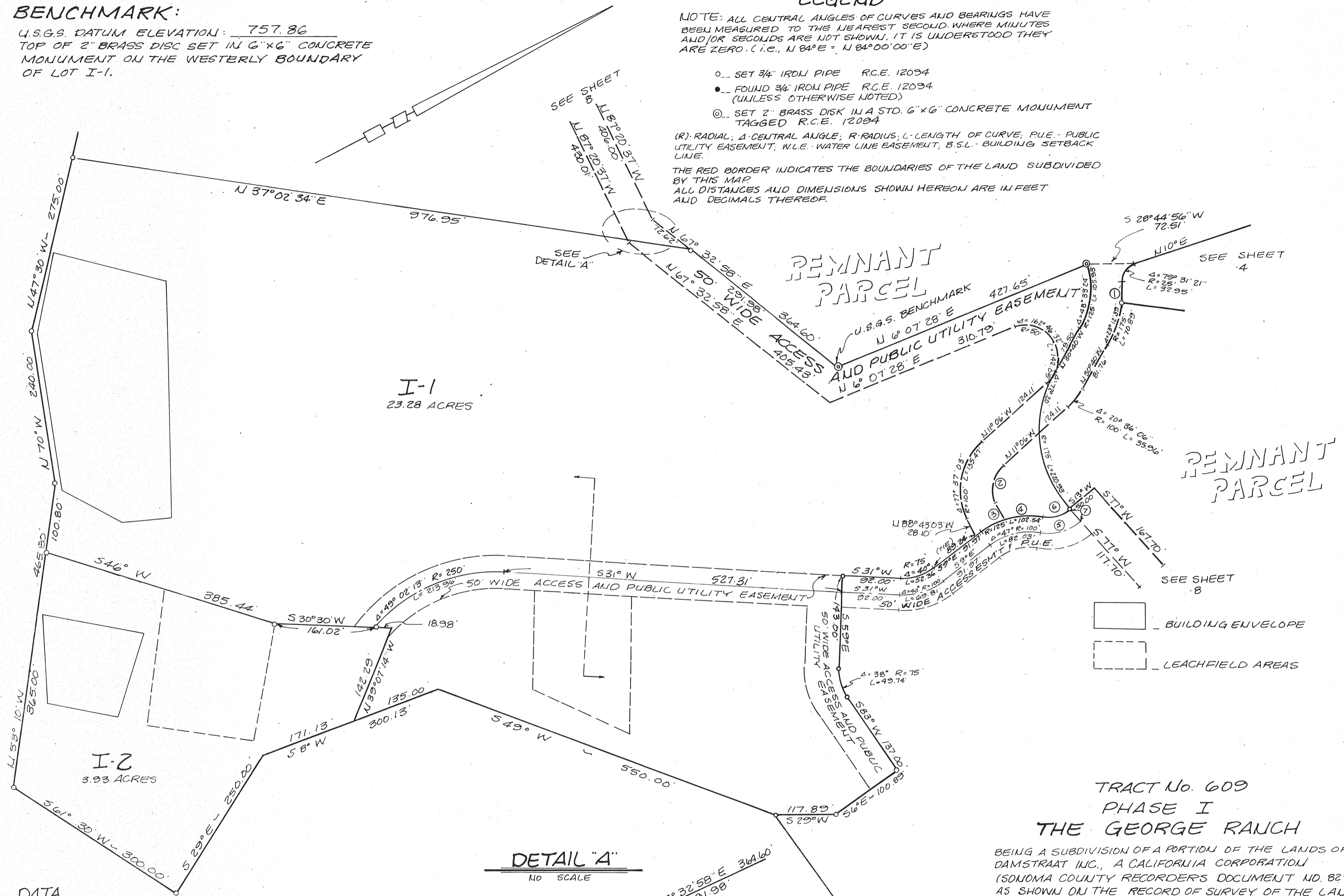
NOTE: ALL CENTRAL ANGLES OF CURVES AND BEARINGS HAVE
 BEEN MEASURED TO THE NEAREST SECOND WHERE MINUTES
 AND/OR SECONDS ARE NOT SHOWN. IT IS UNDERSTOOD THEY
 ARE ZERO. (I.E., N 84° E = N 84° 00' 00" E)

- SET 3/4" IRON PIPE R.C.E. 12034
- FOUND 3/4" IRON PIPE R.C.E. 12034
(UNLESS OTHERWISE NOTED)
- ⊙ SET 2" BRASS DISK IN A STD. 6"X6" CONCRETE MONUMENT
TAGGED R.C.E. 12034

(R)- RADIAL; Δ- CENTRAL ANGLE; R- RADIUS; L- LENGTH OF CURVE; P.U.E.- PUBLIC
 UTILITY EASEMENT; W.L.E.- WATER LINE EASEMENT; B.S.L.- BUILDING SETBACK
 LINE.

THE RED BORDER INDICATES THE BOUNDARIES OF THE LAND SUBDIVIDED
 BY THIS MAP.
 ALL DISTANCES AND DIMENSIONS SHOWN HEREON ARE IN FEET
 AND DECIMALS THEREOF.

I.3



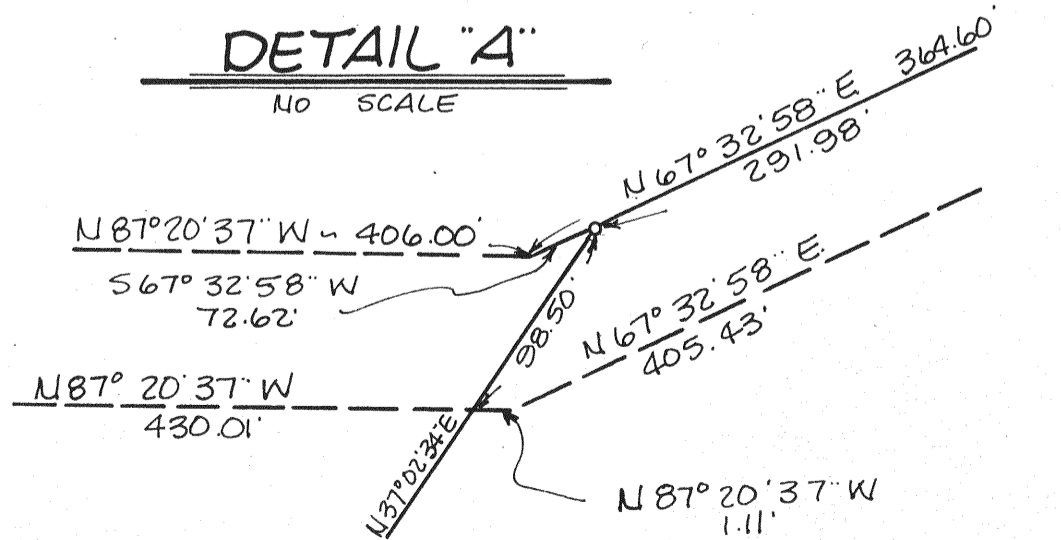
I-1
23.28 ACRES

I-2
3.93 ACRES

REMNANT
PARCEL

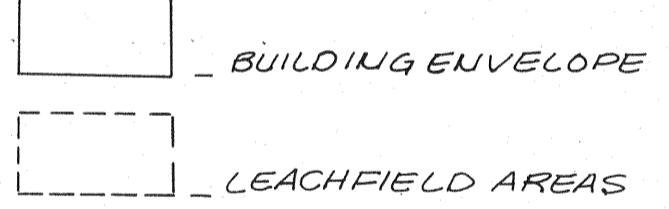
REMNANT
PARCEL

DETAIL "A"



DATA

①	Δ = 11° 38' 52"	R = 175	L = 35.58
②	Δ = 77° 31' 03"	R = 50	L = 67.73
③	N 88° 43' 03" W	28.13	
④	Δ = 25° 10' 50"	R = 125	L = 54.94
⑤	Δ = 51°	R = 75	L = 66.76
⑥	Δ = 51°	R = 50	L = 44.51
⑦	S 77° W	25.00	



**TRACT No. 609
 PHASE I
 THE GEORGE RANCH**

BEING A SUBDIVISION OF A PORTION OF THE LANDS OF
 DAMSTRAAT INC., A CALIFORNIA CORPORATION
 AS SHOWN ON THE RECORD OF SURVEY OF THE LANDS
 OF DAMSTRAAT INVESTORS, FILED IN 326 MAPS 32 & 33
 ALSO BEING A PORTION OF THE PETALUMA RANCHO
 SONOMA COUNTY, CALIFORNIA
 BEING A PORTION OF A.P. No. 142-200-07

**OBERKAMPER & ASSOCIATES
 CIVIL ENGINEERS, INC.**
 SANTA ROSA, CALIFORNIA