

LEGEND

NOTE: ALL CENTRAL ANGLES OF CURVES AND BEARINGS HAVE BEEN MEASURED TO THE NEAREST SECOND. WHERE MINUTES AND/OR SECONDS ARE NOT SHOWN, IT IS UNDERSTOOD THEY ARE ZERO. (i.e.; N 84° E = N 84° 00' 00" E)

- SET 3/4" IRON PIPE R.C.E. 12034
- FOUND 3/4" IRON PIPE R.C.E. 12034 (UNLESS OTHERWISE NOTED)

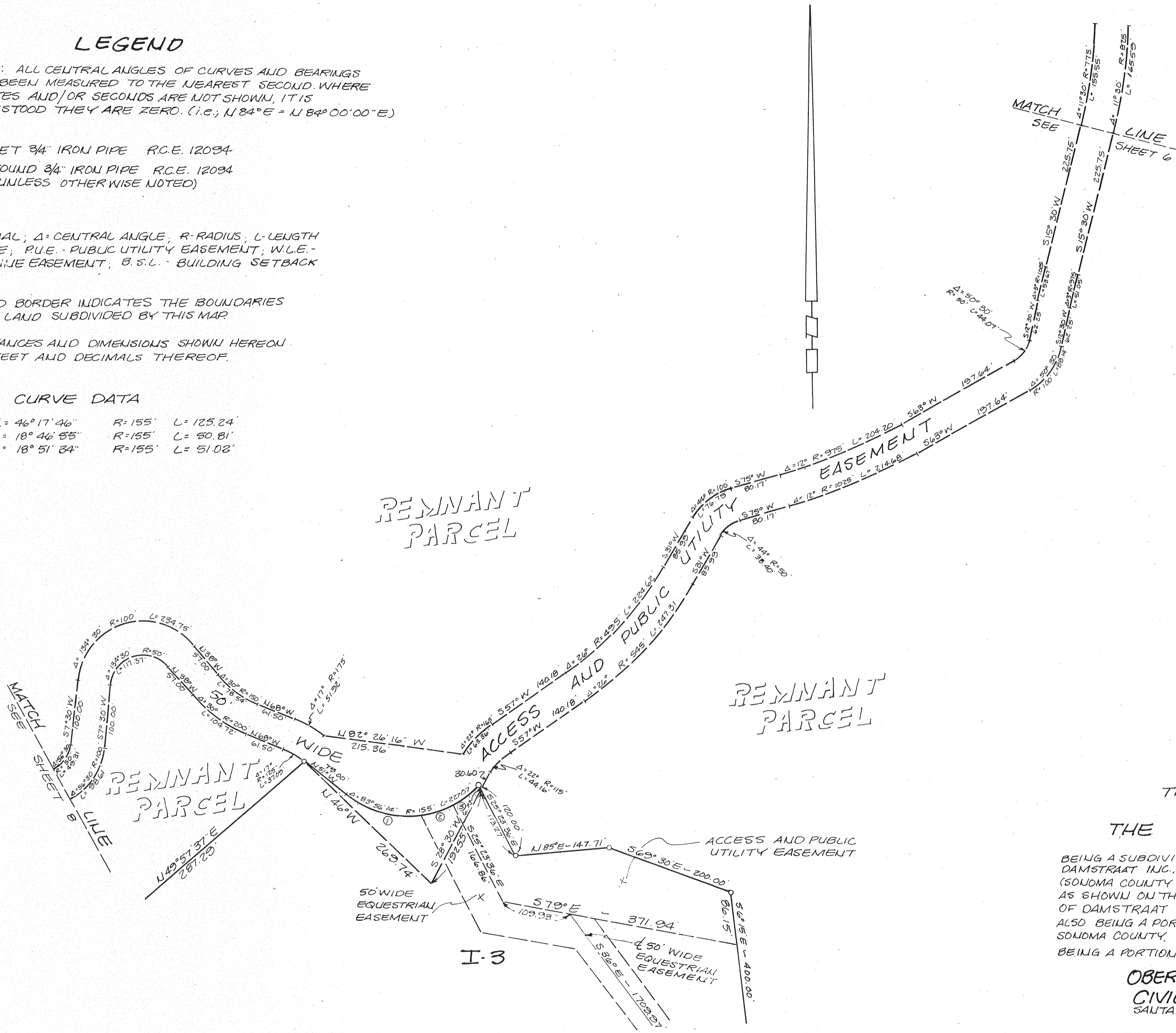
(R) - RADIAL; Δ - CENTRAL ANGLE; R - RADIUS; L - LENGTH OF CURVE; P.U.E. - PUBLIC UTILITY EASEMENT; W.L.E. - WATER LINE EASEMENT; B.S.L. - BUILDING SETBACK LINE

THE RED BORDER INDICATES THE BOUNDARIES OF THE LAND SUBDIVIDED BY THIS MAP

ALL DISTANCES AND DIMENSIONS SHOWN HEREON ARE IN FEET AND DECIMALS THEREOF.

CURVE DATA

- | | | | |
|---|-----------------|----------|-------------|
| ① | Δ = 46° 17' 46" | R = 155' | L = 125.24' |
| ② | Δ = 18° 46' 55" | R = 155' | L = 50.81' |
| ③ | Δ = 18° 51' 34" | R = 155' | L = 51.02' |



TRACT No. 609 PHASE I THE GEORGE RANCH

BEING A SUBDIVISION OF A PORTION OF THE LANDS OF DAMSTRAAT INC., A CALIFORNIA CORPORATION (SONOMA COUNTY RECORDERS DOCUMENT NO. 82-28001) AS SHOWN ON THE RECORD OF SURVEY OF THE LANDS OF DAMSTRAAT INVESTORS, FILED IN 326 MAPS 32 & 33 ALSO BEING A PORTION OF THE PETALUMA RANCHO, SONOMA COUNTY, CALIFORNIA.

BEING A PORTION OF A.P. No. 142-200-07

OBERKAMPER & ASSOCIATES
CIVIL ENGINEERS, INC.
SANTA ROSA, CALIFORNIA

SCALE: 1" = 100'