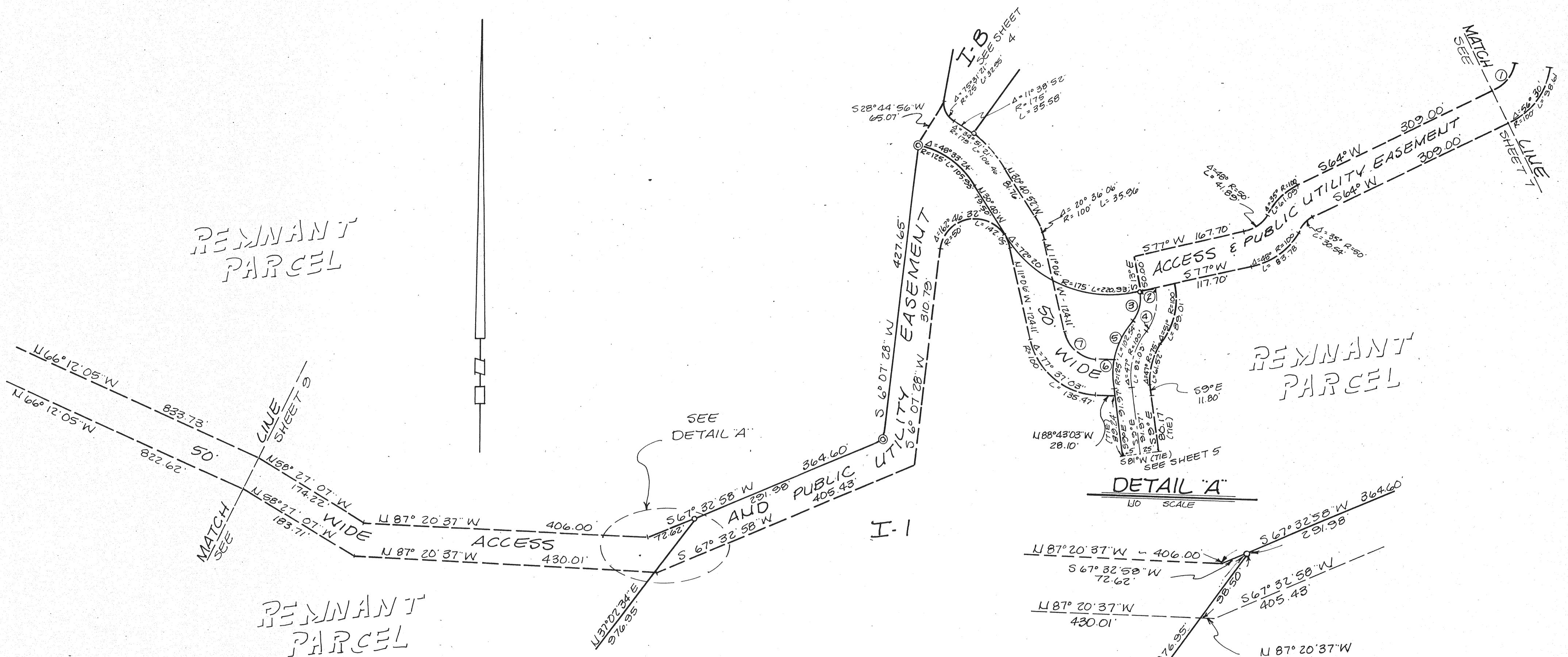


REMNANT
PARCEL

REMNANT
PARCEL

REMNANT
PARCEL



DATA

①	$\Delta = 56^{\circ} 30'$	$R = 50'$	$L = 49.31'$
②	$S 77^{\circ} W$	$25.00'$	
③	$\Delta = 51^{\circ}$	$R = 50'$	$L = 44.51'$
④	$\Delta = 51^{\circ}$	$R = 75'$	$L = 66.76'$
⑤	$\Delta = 25^{\circ} 10' 50''$	$R = 125'$	$L = 54.94'$
⑥	$N 88^{\circ} 43' 03'' W$	$28.13'$	
⑦	$\Delta = 77^{\circ} 37' 03''$	$R = 50'$	$L = 67.73'$

LEGEND

NOTE: ALL CENTRAL ANGLES OF CURVES AND BEARINGS HAVE BEEN MEASURED TO THE NEAREST SECOND. WHERE MINUTES AND/OR SECONDS ARE NOT SHOWN, IT IS UNDERSTOOD THEY ARE ZERO. (i.e., $N 84^{\circ} E = N 84^{\circ} 00' 00'' E$)

- SET $3/4"$ IRON PIPE R.C.E. 12094
- FOUND $3/4"$ IRON PIPE R.C.E. 12094
- ⊙ SET 2" BRASS DISK IN A STD. 6" x 6" CONCRETE MONUMENT, TAGGED R.C.E. 12094

(R) - RADIAL; Δ - CENTRAL ANGLE; R - RADIUS; L - LENGTH OF CURVE; P.U.E. - PUBLIC UTILITY EASEMENT; W.L.E. - WATER LINE EASEMENT; B.S.L. - BUILDING SETBACK LINE

THE RED BORDER INDICATES THE BOUNDARIES OF THE LAND SUBDIVIDED BY THIS MAP.

ALL DISTANCES AND DIMENSIONS SHOWN HEREON ARE IN FEET AND DECIMALS THEREOF.

TRACT No. 609
PHASE I

THE GEORGE RANCH

BEING A SUBDIVISION OF A PORTION OF THE LANDS OF DAMSTRAAT INC., A CALIFORNIA CORPORATION (SONOMA COUNTY RECORDERS DOCUMENT NO. 82-28001) AS SHOWN ON THE RECORD OF SURVEY OF THE LANDS OF DAMSTRAAT INVESTORS, FILED IN 326 MAPS PG 32 & 33, ALSO BEING A PORTION OF THE PETALUMA RANCHO, SONOMA COUNTY, CALIFORNIA

BEING A PORTION OF A.P. No. 142-200-07.

OBERKAMPER & ASSOCIATES
CIVIL ENGINEERS, INC.
SANTA ROSA, CALIFORNIA

SCALE: 1" = 100'

SHEET 8 OF 9