

# LEGEND

NOTE: ALL CENTRAL ANGLES OF CURVES AND BEARINGS HAVE BEEN MEASURED TO THE NEAREST SECOND WHERE MINUTES AND/OR SECONDS ARE NOT SHOWN, IT IS UNDERSTOOD THEY ARE ZERO. (i.e., N 84°E = N 84°00'00"E)

- SET 3/4" IRON PIPE R.C.E. 12094
- FOUND 3/4" IRON PIPE R.C.E. 12094 (UNLESS OTHERWISE NOTED)
- ⊙ SET 2" BRASS DISK IN A STD. MONUMENT WELL, SET TO COUNTY STANDARD AND TAGGED R.C.E. 12094.

(R)-RADIAL; Δ-CENTRAL ANGLE; R-RADIUS; L-LENGTH OF CURVE; P.U.E.-PUBLIC UTILITY EASEMENT; W.L.E.-WATERLINE EASEMENT; P.D.E.-PRIVATE DRAINAGE EASEMENT; B.S.L.-BUILDING SETBACK LINE.

THE RED BORDER INDICATES THE BOUNDARIES OF THE LAND SUBDIVIDED BY THIS MAP.



PARCEL 'X' INCLUDES WHITE ALDER AND BAYTREE AS PRIVATE STREETS, P.U.E., W.L.E., & P.D.E.

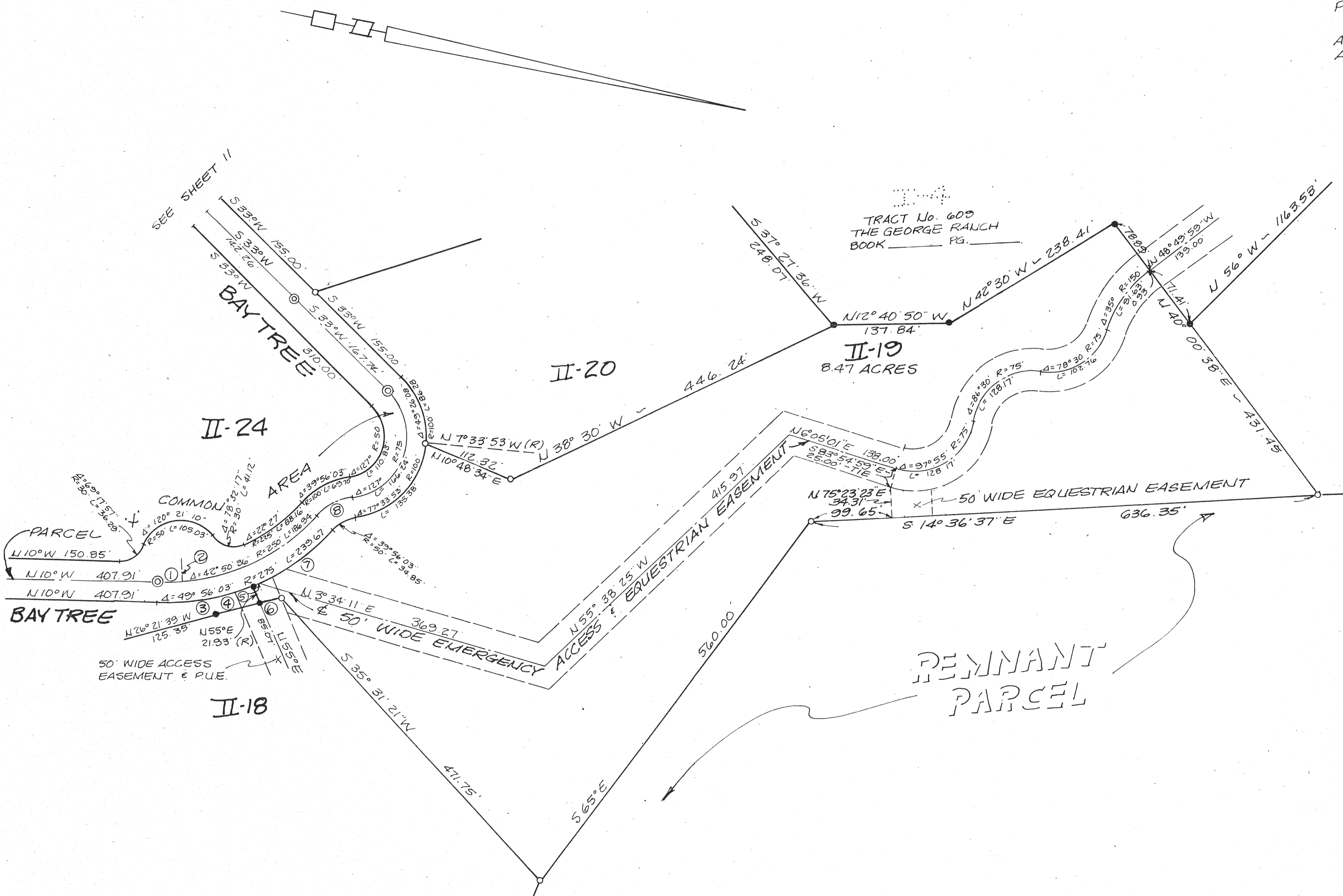
PARCEL II-A IS FOR RECREATIONAL USE.

ALL DISTANCES AND DIMENSIONS SHOWN HEREON ARE IN FEET AND DECIMALS THEREOF.

## DATA

- |   |                     |          |             |
|---|---------------------|----------|-------------|
| ① | Δ = 7° 05' 27"      | R = 250' | L = 30.94'  |
| ② | S 76° 54' 33" W (R) | 25.00'   |             |
| ③ | Δ = 25°             | R = 300' | L = 119.99' |
| ④ | N 26° 21' 39" W     | 58.81'   |             |
| ⑤ | Δ = 1° 28' 24"      | R = 275' | L = 7.07'   |
| ⑥ | S 26° 21' 38" E     | 25.29'   |             |
| ⑦ | Δ = 24° 56' 03"     | R = 275' | L = 119.68' |
| ⑧ | Δ = 39° 56' 03"     | R = 75'  | L = 52.27'  |

-  BUILDING ENVELOPE
-  LEACHFIELD AREAS



SCALE: 1"=100'

SHEET 13 OF 14

JOB NO. 418-81