

REMNANT
PARCEL

II-31

II-31

REMNANT
PARCEL

LEGEND

NOTE: ALL CENTRAL ANGLES OF CURVES AND BEARINGS HAVE BEEN MEASURED TO THE NEAREST SECOND. WHERE MINUTES AND/OR SECONDS ARE NOT SHOWN, IT IS UNDERSTOOD THEY ARE ZERO. (i.e., N 84° E = N 84° 00' 00" E)

- SET 3/4" IRON PIPE R.C.E. 12094
- FOUND 3/4" IRON PIPE R.C.E. 12094 (UNLESS OTHERWISE NOTED)
- ⊙ SET 2" BRASS DISK IN A STD. MONUMENT WELL SET TO COUNTY STANDARD AND TAGGED R.C.E. 12094

(R) - RADIAL; Δ - CENTRAL ANGLE; R - RADIUS; L - LENGTH OF CURVE; P.U.E. - PUBLIC UTILITY EASEMENT; W.L.E. - WATER LINE EASEMENT; P.D.E. - PRIVATE DRAINAGE EASEMENT; B.S.L. - BUILDING SETBACK LINE.

THE RED BORDER INDICATES THE BOUNDARIES OF THE LAND SUBDIVIDED BY THIS MAP

ALL DISTANCES AND DIMENSIONS SHOWN HEREON ARE IN FEET AND DECIMALS THEREOF.

DATA

- | | | | |
|---|-----------------|----------|------------|
| ① | Δ = 73° 52' 21" | R = 25' | L = 32.23' |
| ② | Δ = 48° 11' 23" | R = 25' | L = 21.03' |
| ③ | Δ = 10° 52' 21" | R = 155' | L = 29.41' |
| ④ | N 88° 07' 39" W | 50.00' | |
| ⑤ | Δ = 43° 07' 39" | R = 105' | L = 79.04' |

TRACT NO. 609
THE GEORGE RANCH
BOOK PG.

TRACT No. 610
PHASE II
THE GEORGE RANCH

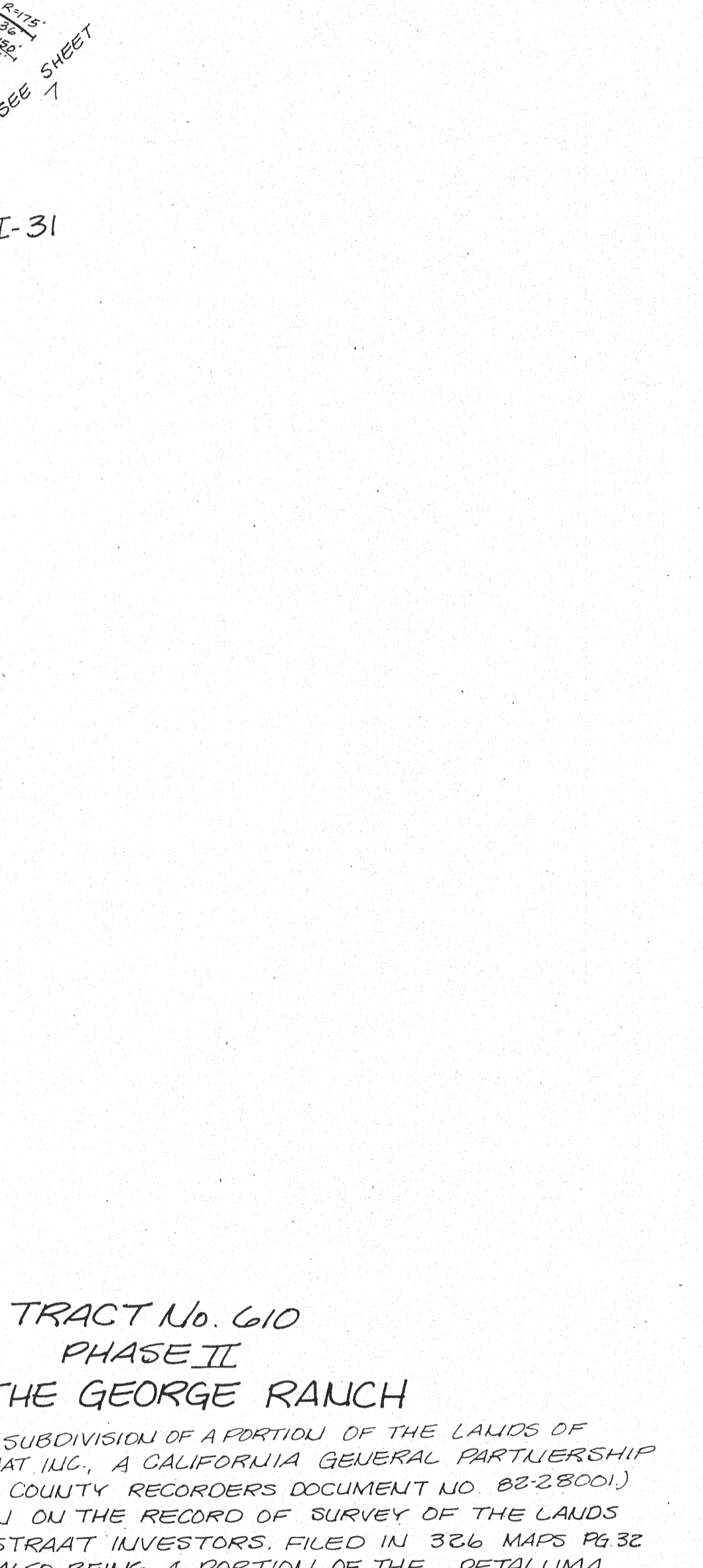
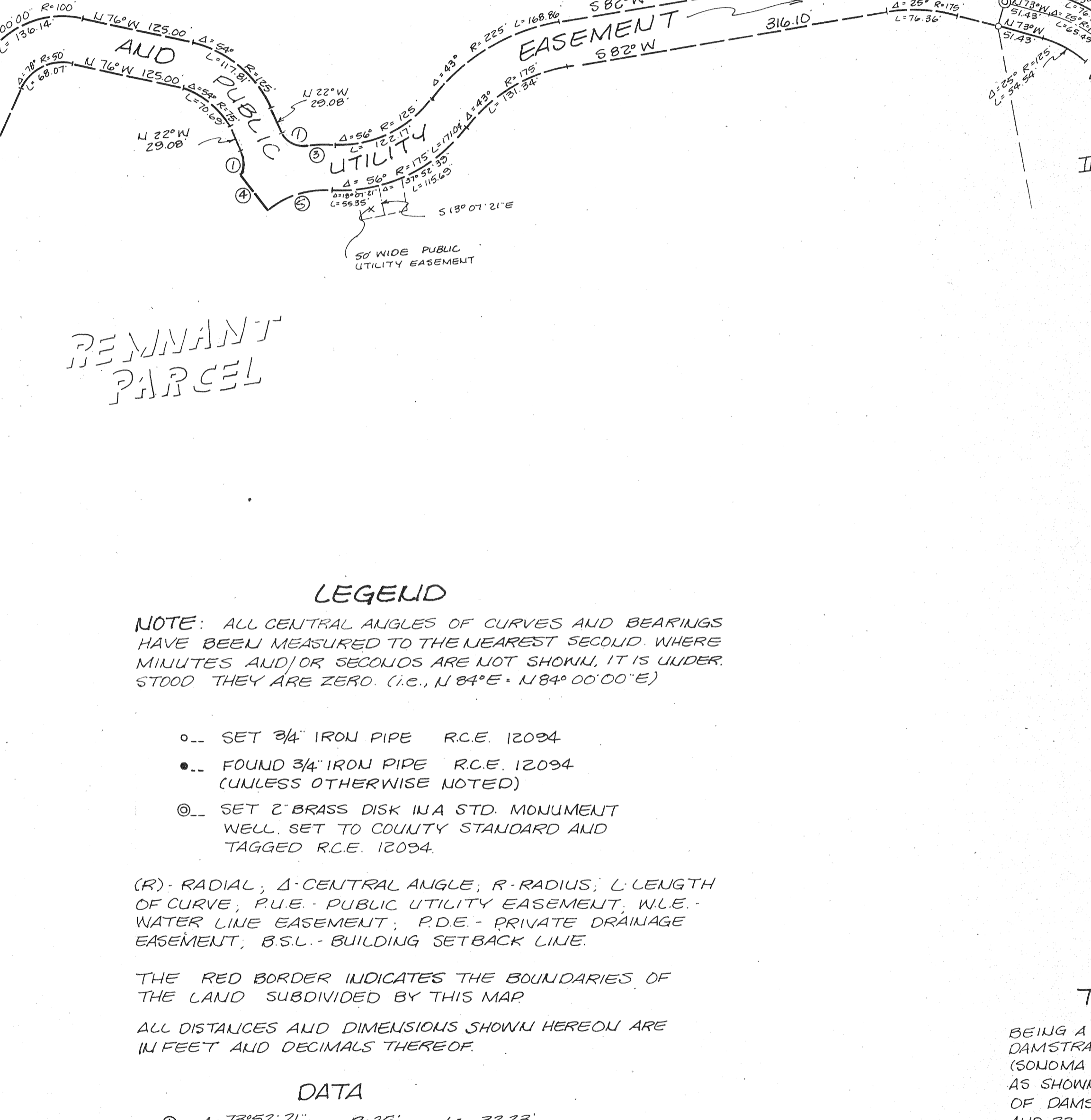
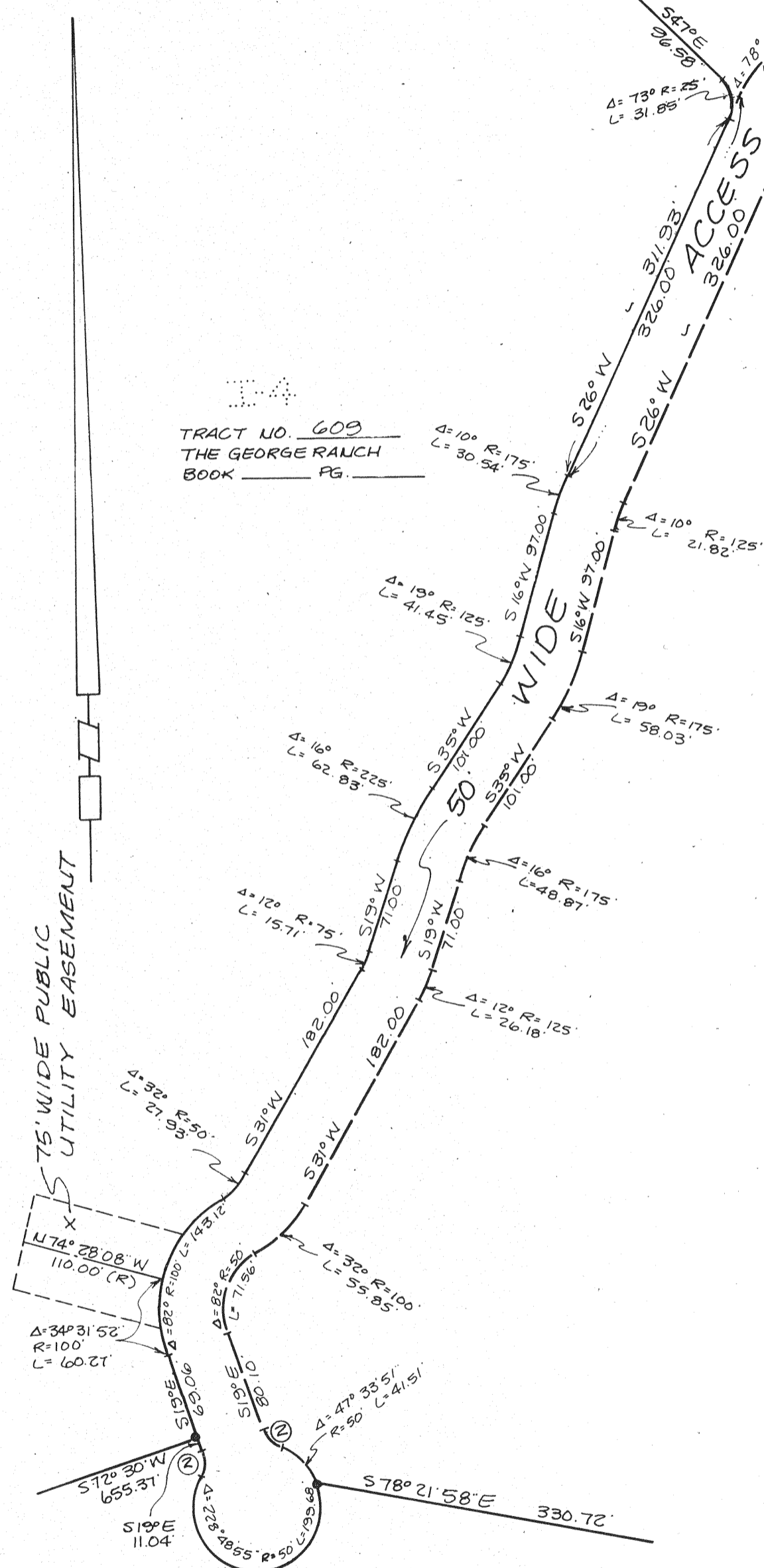
BEING A SUBDIVISION OF A PORTION OF THE LANDS OF DAMSTRAAT INC., A CALIFORNIA GENERAL PARTNERSHIP (SONOMA COUNTY RECORDERS DOCUMENT NO. 82-28001) AS SHOWN ON THE RECORD OF SURVEY OF THE LANDS OF DAMSTRAAT INVESTORS, FILED IN 326 MAPS PG. 32 AND 33, ALSO BEING A PORTION OF THE PETALUMA RANCHO, SONOMA COUNTY, CALIFORNIA
BEING A PORTION OF A.P. No. 142-200-07

OBERKAMPER & ASSOCIATES
CIVIL ENGINEERS, INC.
SANTA ROSA, CALIFORNIA

SCALE: 1"=100'

SHEET 14 OF 14

JOB No. 418-81



TRACT NO. 609
THE GEORGE RANCH
BOOK PG.

SCALE: 1"=100'

SHEET 14 OF 14

JOB No. 418-81