

LEGEND

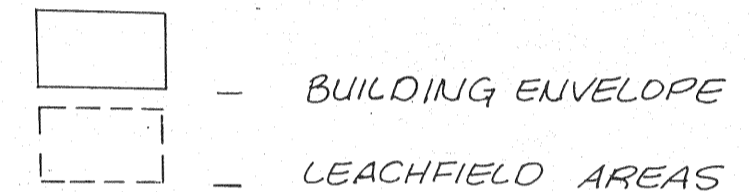
NOTE: ALL CENTRAL ANGLES OF CURVES AND BEARINGS HAVE BEEN MEASURED TO THE NEAREST SECOND, WHERE MINUTES AND/OR SECONDS ARE NOT SHOWN, IT IS UNDERSTOOD THEY ARE ZERO (i.e., N84°E = N84°00'00"E)

- SET 3/4" IRON PIPE R.C.E. 12094
- FOUND 3/4" IRON PIPE R.C.E. 12094 (UNLESS OTHERWISE NOTED)
- ⊙ SET 2" BRASS DISK IN A STD. MONUMENT WELL SET TO COUNTY STANDARD AND TAGGED R.C.E. 12094.
- ⊙ FOUND 2" BRASS DISK IN A STD. MONUMENT WELL SET TO COUNTY STANDARD AND TAGGED R.C.E. 12094.

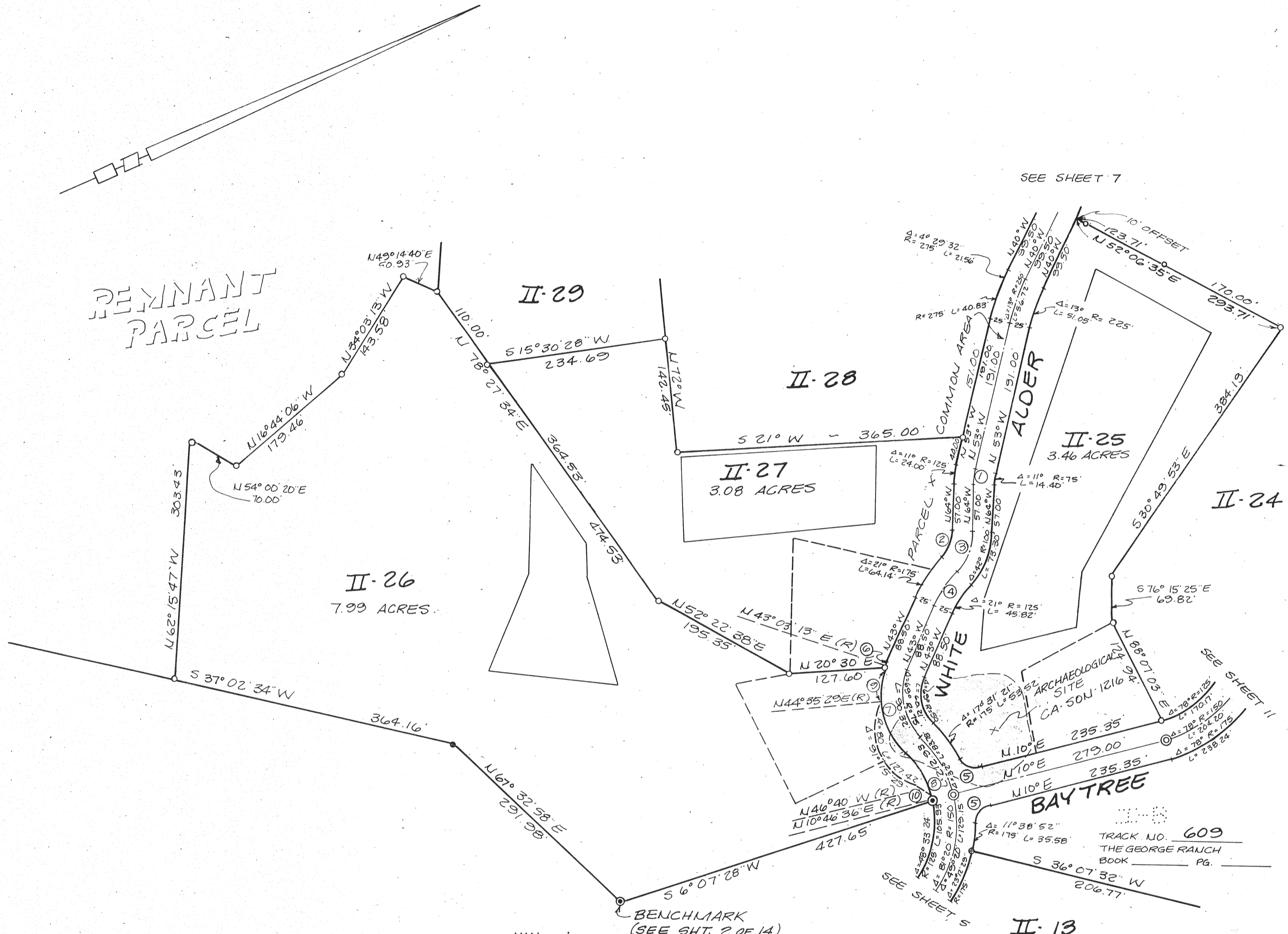
THE RED BORDER INDICATES THE BOUNDARIES OF THE LAND SUBDIVIDED BY THIS MAP.

PARCEL 'X' INCLUDES WHITE ALDER & BAYTREE AS PRIVATE STREETS, P.U.E., W.L.E. & P.D.E. ALL DISTANCES AND DIMENSIONS SHOWN HEREON ARE IN FEET AND DECIMALS THEREOF.

PARCEL II-A IS FOR PRIVATE RECREATIONAL USE.



(R) - RADIAL; Δ - CENTRAL ANGLE; R - RADIUS; L - LENGTH OF CURVE; P.U.E. - PUBLIC UTILITY EASEMENT; W.L.E. - WATERLINE EASEMENT; P.D.E. - PRIVATE DRAINAGE EASEMENT;



DATA

- ① Δ = 11° R = 100' L = 19.20'
- ② Δ = 42° R = 50' L = 36.65'
- ③ Δ = 42° R = 75' L = 54.98'
- ④ Δ = 21° R = 150' L = 54.98'
- ⑤ Δ = 75° 31' 21" R = 25' L = 32.95'
- ⑥ Δ = 3° 56' 47" R = 100' L = 6.89'
- ⑦ Δ = 65° 03' 13" R = 100' L = 113.54'
- ⑧ Δ = 32° 46' 36" R = 125' L = 71.51'
- ⑨ Δ = 29° 20' 55" R = 100' L = 51.22'
- ⑩ Δ = 561° 25' 04" E 1936'

TRACT NO. 609
THE GEORGE RANCH
BOOK _____ PG. _____

TRACT No. 610 PHASE II THE GEORGE RANCH

BEING A SUBDIVISION OF A PORTION OF THE LANDS OF DAMSTRAAT INC., A CALIFORNIA GENERAL PARTNERSHIP SONOMA COUNTY RECORDERS DOCUMENT NO. 82-28001) AS SHOWN ON THE RECORD OF SURVEY OF THE LANDS OF DAMSTRAAT INVESTORS, FILED IN 326 MAPS 32 & 33 ALSO BEING A PORTION OF THE PETALUMA RANCHO, SONOMA COUNTY, CALIFORNIA

BEING A PORTION OF A.P. No. 142-200-07

OBERKAMPER & ASSOCIATES
CIVIL ENGINEERS, INC.
SANTA ROSA, CALIFORNIA

SCALE: 1" = 100'

SHEET 6 OF 14

JOB NO. 418-81