

**LEGEND**

ALL DISTANCES AND DIMENSIONS SHOWN HEREON ARE IN FEET AND DECIMALS THEREOF

THE RED BORDER INDICATES THE BOUNDARIES OF THE LAND SUBDIVIDED BY THIS MAP  
 PARCEL 'X' INCLUDES WHITE ALDER AND BAYTREE AS PRIVATE STREETS. P.U.E., W.L.E., & P.D.E.  
 PARCEL II-15 FOR PRIVATE RECREATIONAL USE.

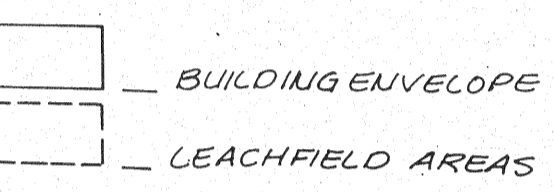
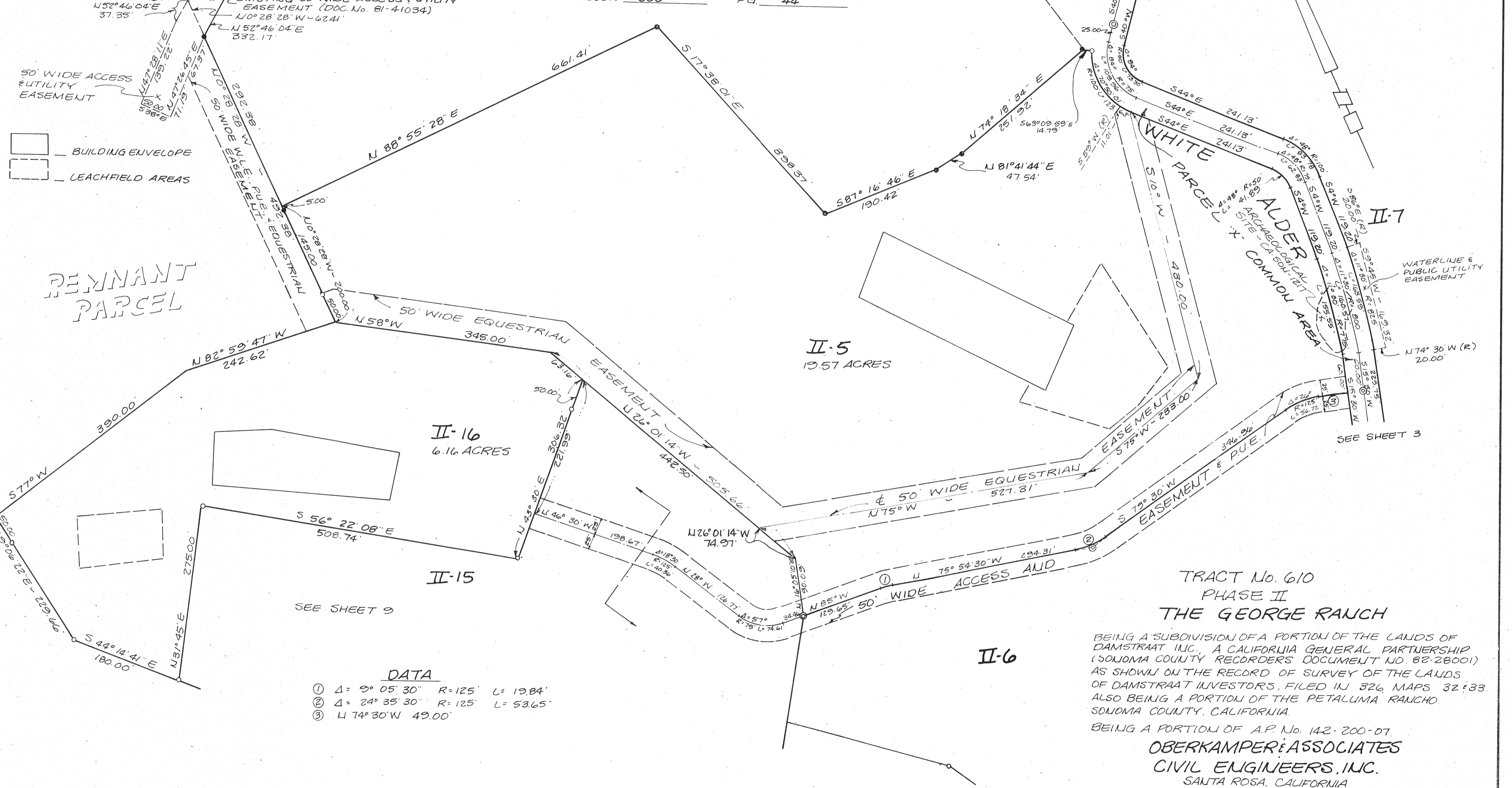
**PARCEL MAP NO. 7327**

BOOK 323 PG. 44

NOTE: ALL CENTRAL ANGLES OF CURVES AND BEARINGS HAVE BEEN MEASURED TO THE NEAREST SECOND, WHERE MINUTES AND/OR SECONDS ARE NOT SHOWN, IT IS UNDERSTOOD THEY ARE ZERO. (i.e., N 84° E = N 84° 00' 00" E)

- SET 3/4" IRON PIPE R.C.E. 12094
- FOUND 3/4" IRON PIPE R.C.E. 12094 (UNLESS OTHERWISE NOTED)
- ⊙ SET 2" BRASS DISK IN A STD. MONUMENT WELL SET TO COUNTY STD. AND TAGGED R.C.E. 12094.

(R) - RADIAL; Δ - CENTRAL ANGLE; R - RADIUS; L - LENGTH OF CURVE; P.U.E. - PUBLIC UTILITY EASEMENT; W.L.E. - WATER LINE EASEMENT; P.D.E. - PRIVATE DRAINAGE EASEMENT; B.S.L. - BUILDING SETBACK LINE.



DEYNAUT PARCEL

**DATA**

①	Δ = 9° 05' 30"	R = 125'	L = 19.84'
②	Δ = 24° 35' 30"	R = 125'	L = 53.65'
③	N 74° 30' W	49.00'	

TRACT No. 610  
 PHASE II  
 THE GEORGE RANCH  
 BEING A SUBDIVISION OF A PORTION OF THE LANDS OF DAMSTRAAT INC., A CALIFORNIA GENERAL PARTNERSHIP (SONOMA COUNTY RECORDERS DOCUMENT NO. 82-28001) AS SHOWN ON THE RECORD OF SURVEY OF THE LANDS OF DAMSTRAAT INVESTORS, FILED IN 326 MAPS 32 & 33, ALSO BEING A PORTION OF THE PETALUMA RANCHO, SONOMA COUNTY, CALIFORNIA.

BEING A PORTION OF A.P. No. 142-200-07  
**OBERKAMPER & ASSOCIATES**  
 CIVIL ENGINEERS, INC.  
 SANTA ROSA, CALIFORNIA