

LEGEND

NOTE: ALL CENTRAL ANGLES OF CURVES AND BEARINGS HAVE BEEN MEASURED TO THE NEAREST SECOND. WHERE MINUTES AND/OR SECONDS ARE NOT SHOWN, IT IS UNDERSTOOD THEY ARE ZERO. (i.e., N 84° E = N 84° 00' 00" E)

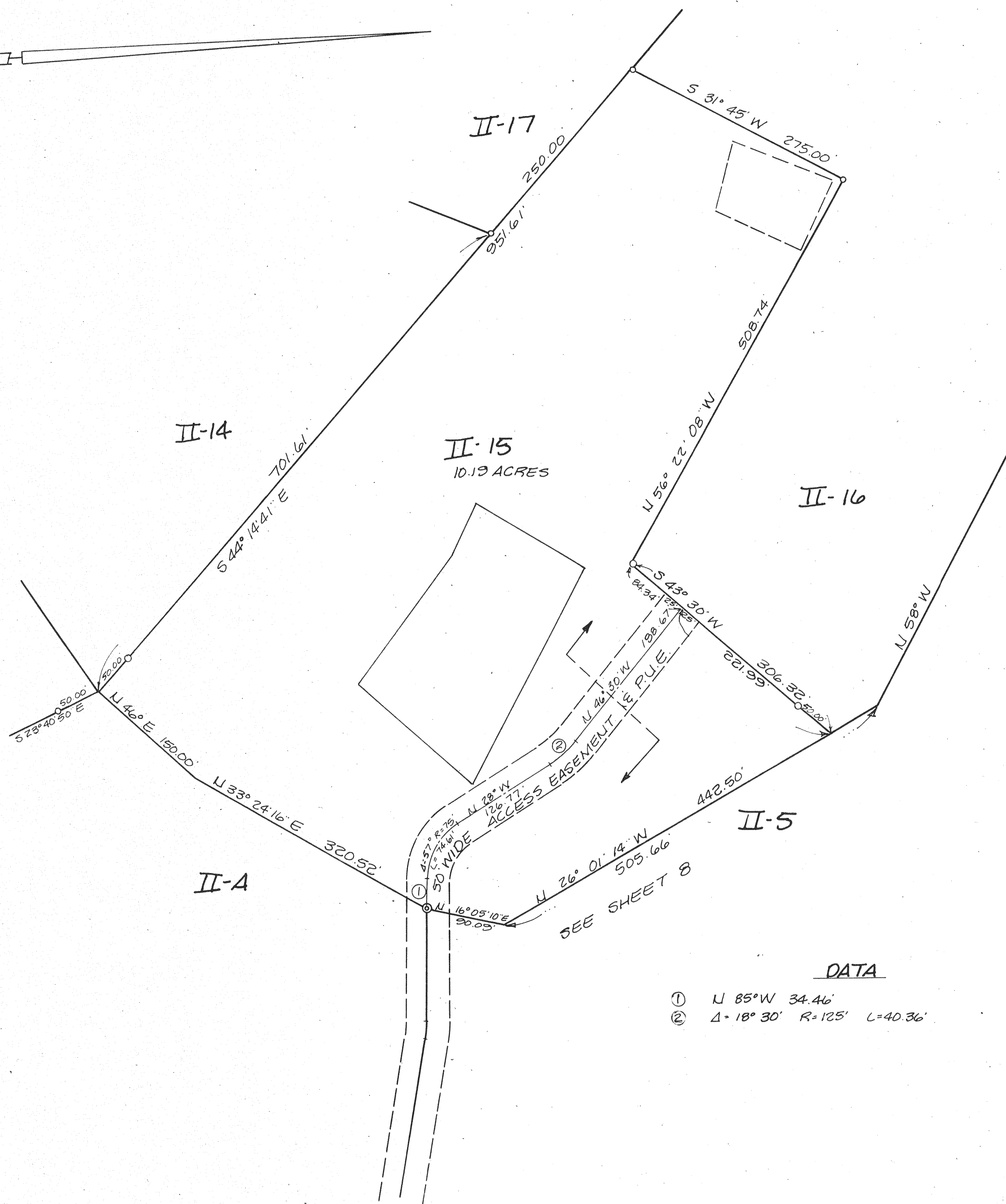
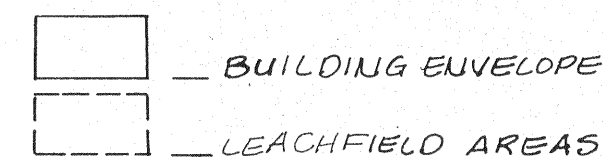
- SET 3/4" IRON PIPE R.C.E. 12094
- FOUND 3/4" IRON PIPE R.C.E. 12094 (UNLESS OTHERWISE NOTED)
- ⊙ SET 2" BRASS DISK IN A STD. MONUMENT WELL SET TO COUNTY STANDARD AND TAGGED R.C.E. 12094.

(R) - RADIAL, Δ - CENTRAL ANGLE, R - RADIUS, L - LENGTH OF CURVE; P.U.E. - PUBLIC UTILITY EASEMENT; W.L.E. - WATERLINE EASEMENT; P.D.E. - PRIVATE DRAINAGE EASEMENT; B.S.L. - BUILDING SETBACK LINE.

THE RED BORDER INDICATES THE BOUNDARIES OF THE LAND SUBDIVIDED BY THIS MAP.

PARCEL 'X' INCLUDES WHITE ALDER AND BAYTREE AS PRIVATE STREETS, P.U.E., W.L.E., & P.D.E.

PARCEL II-A IS FOR PRIVATE RECREATIONAL USE. ALL DISTANCES AND DIMENSIONS SHOWN HEREON ARE IN FEET AND DECIMALS THEREOF.



DATA

- ① N 85° W 34.46'
- ② Δ = 18° 30' R = 125' L = 40.36'

TRACT No. 610 PHASE II THE GEORGE RANCH

BEING A SUBDIVISION OF A PORTION OF THE LANDS OF DAMSTRAAT INC., A CALIFORNIA GENERAL PARTNERSHIP (SONOMA COUNTY RECORDERS DOCUMENT NO. 82-28001) AS SHOWN ON THE RECORD OF SURVEY OF THE LANDS OF DAMSTRAAT INVESTORS, FILED IN 326 MAPS 32 & 33, ALSO BEING A PORTION OF THE PETALUMA RANCHO, SONOMA COUNTY, CALIFORNIA

BEING A PORTION OF A.P. No. 142-200-07

OBERKAMPER & ASSOCIATES
CIVIL ENGINEERS, INC.
SANTA ROSA, CALIFORNIA

SCALE: 1" = 100'

SHEET 9 OF 14

JOB NO. 418-81