

N 89° 32' 38" W - 4702.36'

BASIS OF BEARINGS (326 MAPS 32)

BASIS OF BEARINGS:

THE BASIS OF BEARINGS IS THE RECORD OF SURVEY OF THE LANDS OF DAMSTRAAT INVESTORS, RECORDED IN BOOK 326 OF MAPS AT PAGE 32 & 33, SONOMA COUNTY RECORDS, AND BEING N 89° 32' 38" W, 4702.36 FEET, THE BEARING AND DISTANCE BETWEEN A FOUND 1" IRON PIPE TAGGED R.C.E. 3230, MARKING THE NORTHWEST CORNER AND A FOUND 6"X6" CONCRETE MONUMENT LOCATED N 89° 32' 38" W, 8.76 FEET FROM THE NORTHEAST CORNER.

FND. 1" I.P. TAGGED R.C.E. 3230

FND. 6"X6" CONCRETE MONUMENT

TRACT NO. 609 THE GEORGE RANCH BOOK PG.

REMNANT PARCEL

LEGEND

- SET 3/4" IRON PIPE R.C.E. 12094
- FOUND 3/4" IRON PIPE R.C.E. 12094 (UNLESS OTHERWISE NOTED)
- ⊙ SET 2" BRASS DISK IN A STD. MONUMENT WELL, SET TO COUNTY STANDARD AND TAGGED R.C.E. 12094.

(R) RADIAL; Δ CENTRAL ANGLE; R- RADIUS; L- LENGTH OF CURVE; P.U.E.- PUBLIC UTILITY EASEMENT; W.L.E.- WATER LINE EASEMENT; P.D.E.- PRIVATE DRAINAGE EASEMENT; B.S.L.- BUILDING SETBACK LINE.

THE RED BORDER INDICATES THE BOUNDARIES OF THE LAND SUBDIVIDED BY THIS MAP.

PARCEL Y INCLUDES WHITE ALDER, BROOKLIME, & ELDER BERRY AS PRIVATE STREETS, P.U.E., W.L.E., AND P.D.E. ALL DISTANCES AND DIMENSIONS SHOWN HEREON ARE IN FEET AND DECIMALS THEREOF.

NOTE: ALL CENTRAL ANGLES AND BEARINGS HAVE BEEN MEASURED TO THE NEAREST SECOND WHERE MINUTES AND/OR SECONDS ARE SHOWN, IT IS UNDERSTOOD THEY ARE ZERO. (i.e., N 84° E - N 84° 00' 00" E)

**TRACT No. 611
PHASE III
THE GEORGE RANCH**

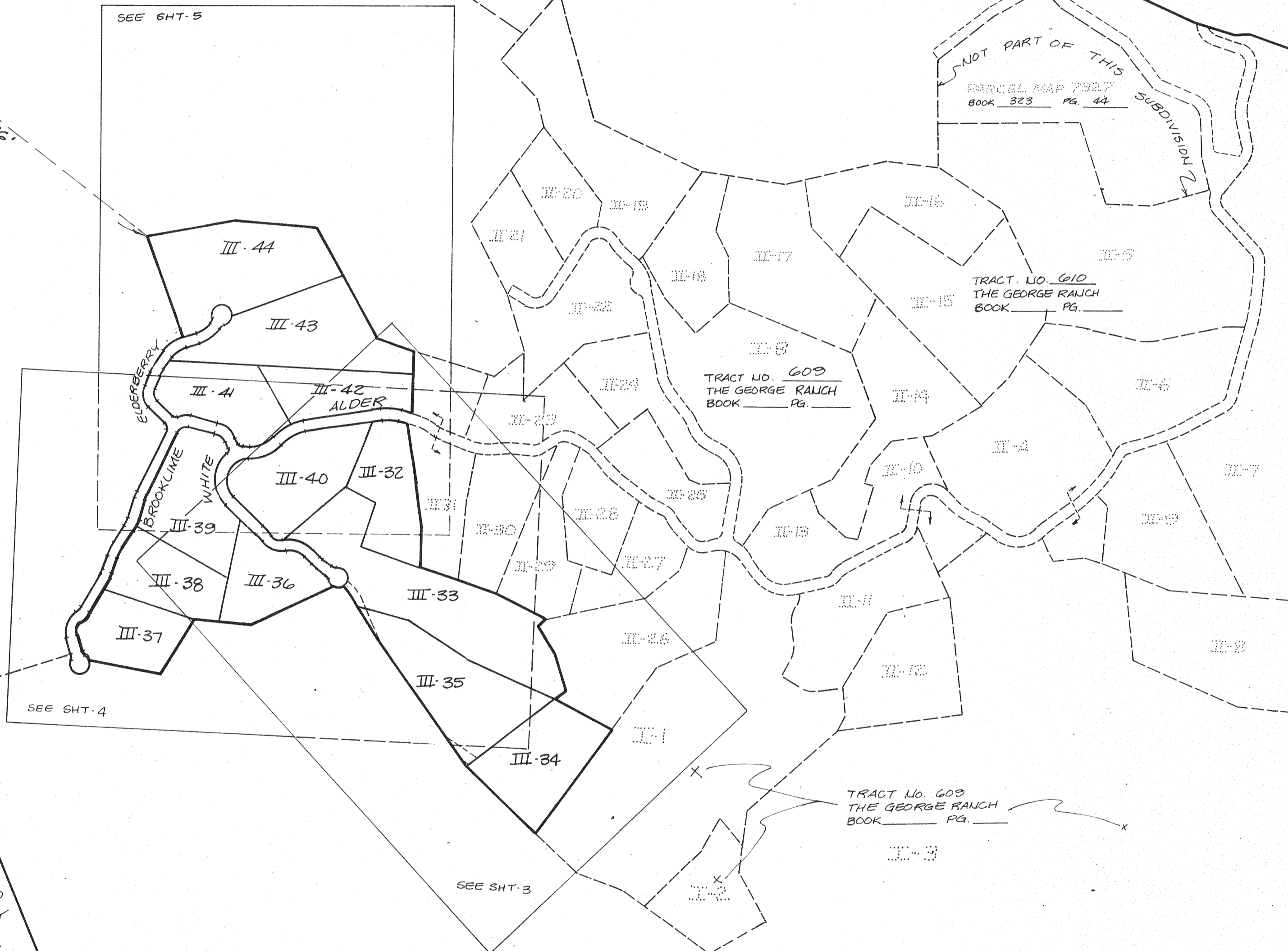
BEING A SUBDIVISION OF A PORTION OF THE LANDS OF DAMSTRAAT INC., A CALIFORNIA GENERAL PARTNERSHIP (SONOMA COUNTY RECORDERS DOCUMENT NO. 82-28001) AS SHOWN ON THE RECORD OF SURVEY OF THE LANDS OF DAMSTRAAT INVESTORS, FILED IN 326 MAPS 32 & 33, ALSO BEING A PORTION OF THE PETALUMA RANCHO, SONOMA COUNTY, CALIFORNIA, BEING A PORTION OF A.P. No. 142-200-07

**OBERKAMPER & ASSOCIATES
CIVIL ENGINEERS, INC.
SANTA ROSA, CALIFORNIA**

SCALE: 1" = 400'

P.R.A.C. NOTES

1. THE GENERAL PLAN ADOPTED JANUARY 1978 DOES NOT ALLOW FURTHER DIVISIONS OF THESE PARCELS SHOWN HEREON. FUTURE DIVISIONS ARE SUBJECT TO THE GENERAL PLAN IN EFFECT AT THAT TIME.
2. AGRICULTURAL USES OCCUR IN THIS AREA AND ARE CONSISTENT WITH THE SONOMA COUNTY GENERAL PLAN. PESTICIDE SPRAYING ASSOCIATED WITH THE AGRICULTURAL USES MAY OCCUR.



SEE SHT-4

SEE SHT-3

SEE SHT-5

PARCEL MAP 7347 BOOK 323 PG. 44

TRACT NO. 609 THE GEORGE RANCH BOOK PG.

TRACT NO. 610 THE GEORGE RANCH BOOK PG.

TRACT No. 609 THE GEORGE RANCH BOOK PG.

160.865 A