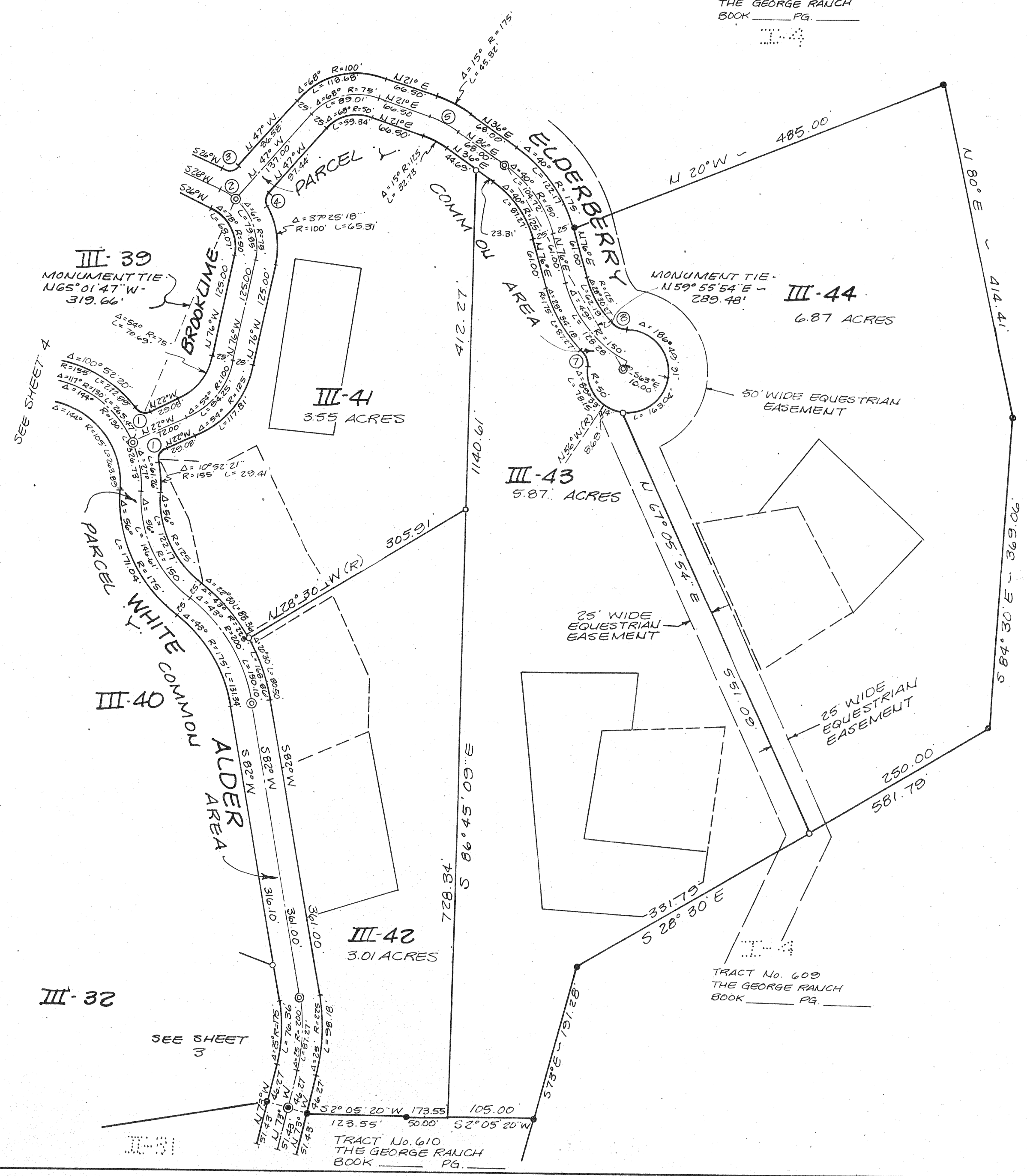


TRACT NO. 609
THE GEORGE RANCH
BOOK _____ PG. _____



DATA

| | | | |
|---|--------------------------------|----------|------------|
| ① | $\Delta = 73^{\circ} 52' 21''$ | R = 25' | L = 32.23' |
| ② | $\Delta = 17^{\circ}$ | R = 75' | L = 22.25' |
| ③ | $\Delta = 73^{\circ}$ | R = 25' | L = 31.85' |
| ④ | $\Delta = 66^{\circ} 25' 18''$ | R = 25' | L = 28.28' |
| ⑤ | $\Delta = 15^{\circ}$ | R = 150' | L = 39.27' |
| ⑥ | $\Delta = 48^{\circ} 11' 23''$ | R = 25' | L = 21.03' |
| ⑦ | $\Delta = 48^{\circ} 07' 23''$ | R = 25' | L = 21.00' |
| ⑧ | $\Delta = 48^{\circ} 19' 04''$ | R = 25' | L = 21.08' |



LEGEND

NOTE: ALL BEARINGS AND CENTRAL ANGLES OF CURVES HAVE BEEN MEASURED TO THE NEAREST SECOND. WHERE MINUTES AND/OR SECONDS ARE NOT SHOWN, IT IS UNDERSTOOD THEY ARE ZERO. (i.e., N 84° E = N 84° 00' 00" E)

- ⊙ -- FOUND 2" BRASS DISK IN A STD. MONUMENT WELL, SET TO COUNTY STANDARD AND TAGGED R.C.E. 12094.
- -- SET 3/4" IRON PIPE R.C.E. 12094
- -- FOUND 3/4" IRON PIPE R.C.E. 12094 (UNLESS OTHERWISE NOTED)
- ⊙ -- SET 2" BRASS DISK IN A STD. MONUMENT WELL, SET TO COUNTY STANDARD AND TAGGED R.C.E. 12094.

(R)-RADIAL; Δ -CENTRAL ANGLE; R-RADIUS; L-LENGTH OF CURVE; P.U.E.-PUBLIC UTILITY EASEMENT; W.L.E.-WATERLINE EASEMENT; P.D.E.-PRIVATE DRAINAGE EASEMENT; B.S.L.-BUILDING SETBACK LINE.

THE RED BORDER INDICATES THE BOUNDARIES OF THE LAND SUBDIVIDED BY THIS MAP

PARCEL Y INCLUDES WHITE ALDER, BROOKLIME, AND ELDERBERRY AS PRIVATE STREETS, P.U.E., P.D.E. & W.L.E.

ALL DISTANCES AND DIMENSIONS SHOWN HEREON ARE IN FEET AND DECIMALS THEREOF.

- BUILDING ENVELOPE
- LEACHFIELD AREAS

**TRACT No. 611
PHASE III
THE GEORGE RANCH**

BEING A SUBDIVISION OF A PORTION OF THE LANDS OF DAMSTRAAT INC., A CALIFORNIA GENERAL PARTNERSHIP, (SONOMA COUNTY RECORDERS DOCUMENT NO. 82-28001 AS SHOWN ON THE RECORD OF SURVEY OF THE LANDS OF DAMSTRAAT INVESTORS, FILED IN 326 MAPS 32 & 33, ALSO BEING A PORTION OF THE PETALUMA RANCHO, SONOMA COUNTY, CALIFORNIA, BEING A PORTION OF A.P. No. 142-200-07

**OBBERKAMPER & ASSOCIATES
CIVIL ENGINEERS, INC.
SANTA ROSA, CALIFORNIA**

SCALE: 1"=100' SHEET 5 OF 5