

$N 89^{\circ} 32' 38'' W - 4702.36'$

FND. 1" I.P. TAGGED  
R.C.E. 3230

I-4

TRACT No. 609  
THE GEORGE RANCH  
BOOK \_\_\_\_\_ PG. \_\_\_\_\_

SEE SHEET-6

SEE SHT.-5

SEE SHT. 4

**BASIS OF BEARINGS:**

THE BASIS OF BEARINGS IS THE RECORD OF SURVEY OF THE LANDS OF DAMSTRAAT INVESTORS RECORDED IN BOOK 326 OF MAPS AT PAGE 32 & 33. SONOMA COUNTY RECORDS. AND BEING  $N 89^{\circ} 32' 38'' W$ , 4702.36 FEET, THE BEARING AND DISTANCE BETWEEN A FOUND 1" IRON PIPE TAGGED R.C.E. 3230. MARKING THE NORTHWEST CORNER AND A FOUND 6"x6" CONCRETE MONUMENT, LOCATED  $N 89^{\circ} 32' 38'' W$ , 8.76 FEET FROM THE NORTHWEST CORNER.

**LEGEND**

- SET 3/4" IRON PIPE R.C.E. 12094
- FOUND 3/4" IRON PIPE
- ⊙ FND 2" BRASS DISK IN A STD. MONUMENT WELL SET TO COUNTY STANDARD AND TAGGED R.C.E. 12094.

(R) RADIAL; Δ CENTRAL ANGLE; R- RADIUS; L- LENGTH OF CURVE; P.U.E.- PUBLIC UTILITY EASEMENT; W.L.E.- WATER LINE EASEMENT; P.D.E.- PRIVATE DRAINAGE EASEMENT; B.S.L.- BUILDING SETBACK LINE.

THE RED BORDER INDICATES THE BOUNDARIES OF THE LAND SUBDIVIDED BY THIS MAP.

PARCEL "Z" INCLUDES HAWKS BEARD AS A PRIVATE STREET. P.U.E., W.L.E. AND P.D.E.

ALL DISTANCES AND DIMENSIONS SHOWN HEREON ARE IN FEET AND DECIMALS THEREOF.

**BENCHMARK:**

U.S.G.S. BENCHMARK - B.M. 23JD  
ELEVATION 434.03  
STANDARD BRASS DISC. IN 6"x6" CONCRETE LOCATED 2.5 MILES WEST OF EL VERANO AND 900' SOUTH AND 35' WEST OF ROAD JUNCTION AND 15' NORTH OF FENCE CORNER.

TRACT No. 612

PHASE IV

**THE GEORGE RANCH**

BEING A SUBDIVISION OF A PORTION OF THE LANDS OF DAMSTRAAT INC., A CALIFORNIA GENERAL PARTNERSHIP (SONOMA COUNTY RECORDERS DOCUMENT NO. 82-28001) AS SHOWN ON THE RECORD OF SURVEY OF THE LANDS OF DAMSTRAAT INVESTORS, FILED IN 326 MAPS 32 & 33, ALSO BEING A PORTION OF THE PETALUMA RANCHO, SONOMA COUNTY, CALIFORNIA, BEING A PORTION OF A.P. No. 142-200-07

**OBERKAMPER & ASSOCIATES  
CIVIL ENGINEERS, INC.**

SANTA ROSA, CALIFORNIA

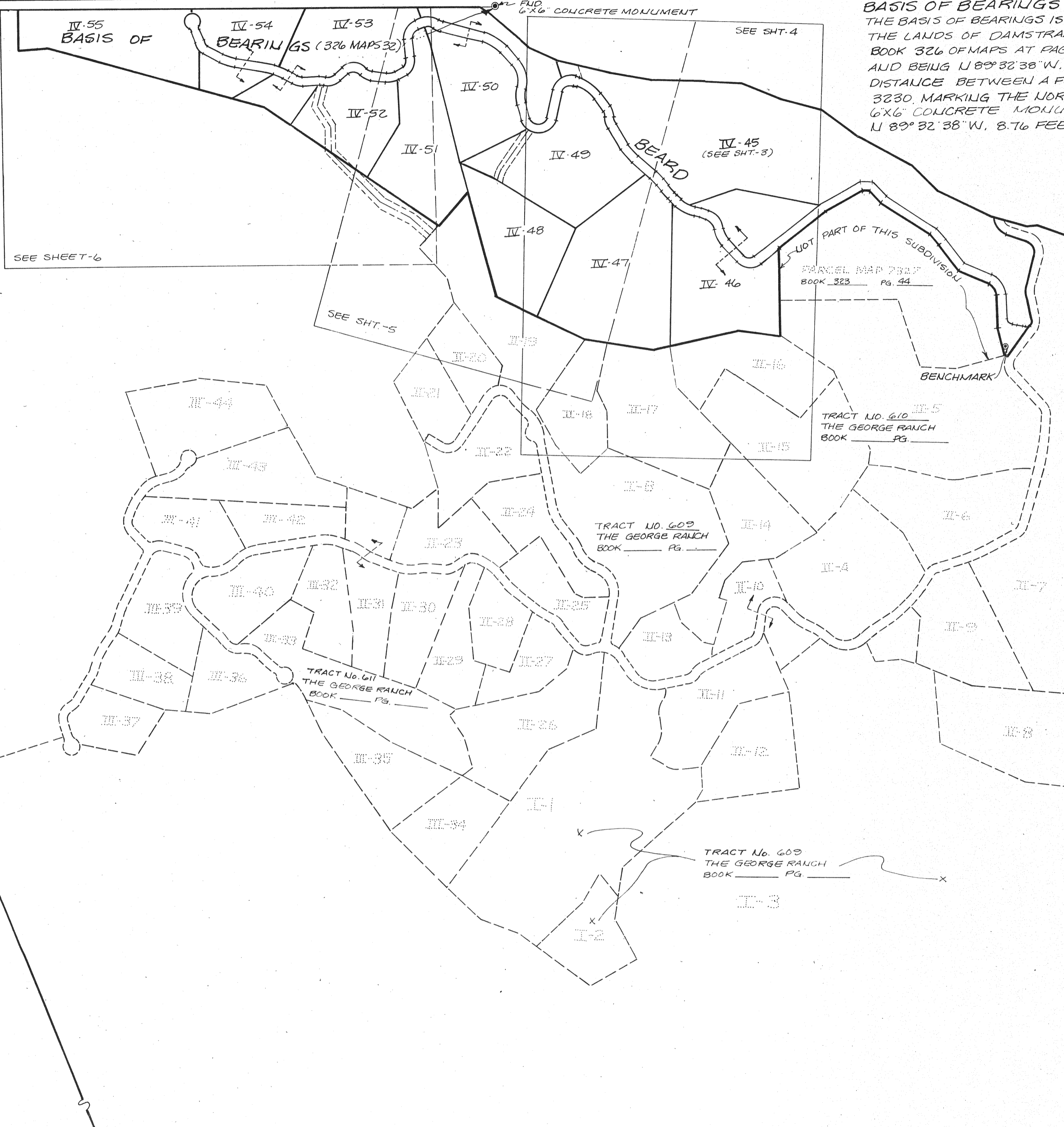
SCALE: 1" = 400'

SHEET 2 OF 7  
JOB NO. 418-81

P.R.A.C. NOTES

THE GENERAL PLAN ADOPTED JANUARY, 1978 DOES NOT ALLOW FURTHER DIVISIONS OF THESE PARCELS SHOWN HEREON. FUTURE DIVISIONS ARE SUBJECT TO THE GENERAL PLAN IN EFFECT AT THAT TIME.

AGRICULTURAL USES OCCUR IN THIS AREA AND ARE CONSISTENT WITH THE SONOMA COUNTY GENERAL PLAN. PESTICIDE SPRAYING ASSOCIATED WITH THE AGRICULTURAL USES MAY OCCUR.



160.865 'A'