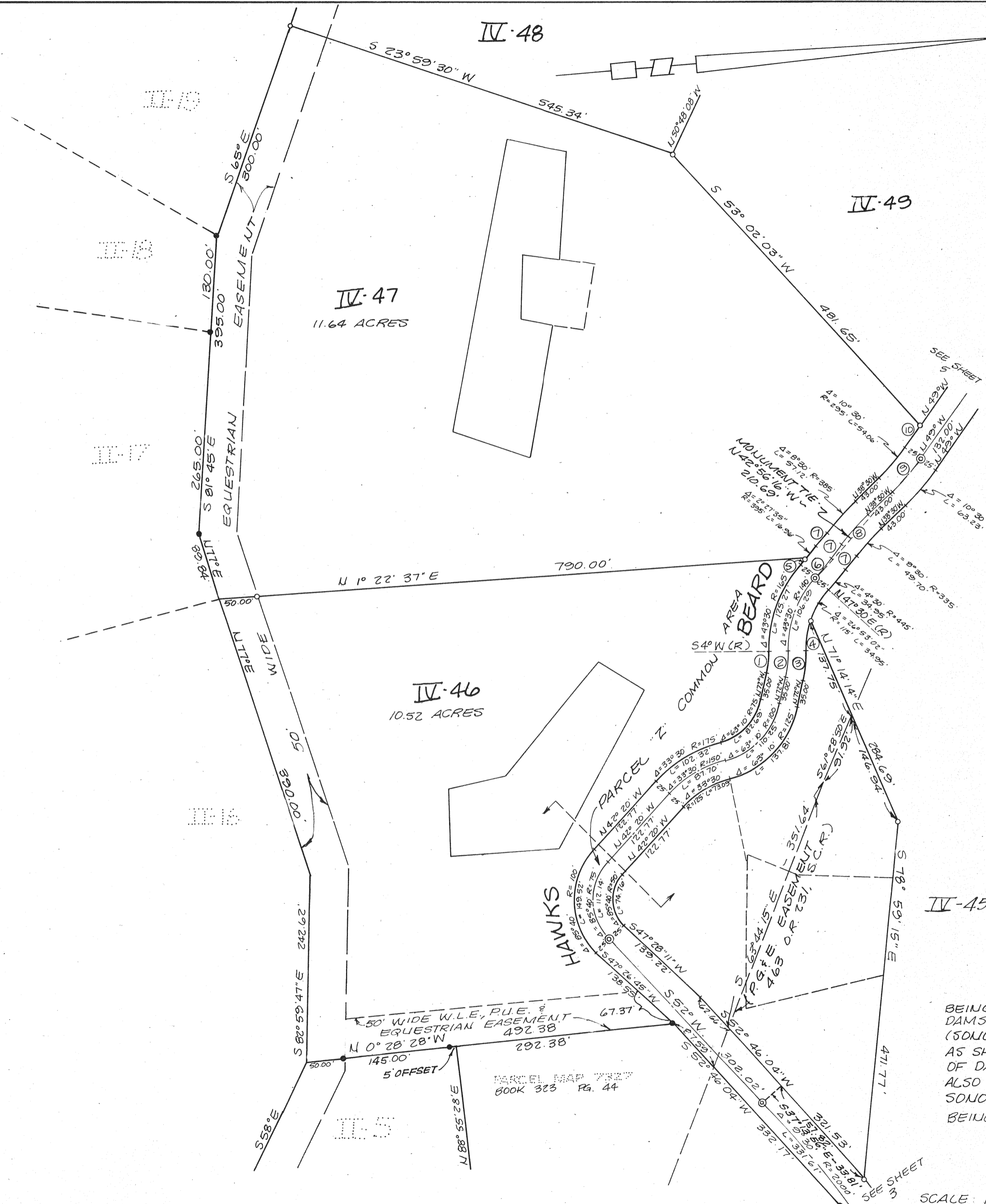


TRACT No. 610  
THE GEORGE RAUCH  
BOOK \_\_\_\_\_ PG. \_\_\_\_\_



**LEGEND**

- -- SET 3/4" IRON PIPE R.C.E. 12034
  - -- FOUND 3/4" IRON PIPE R.C.E. 12034 (UNLESS OTHERWISE NOTED)
  - ⊙ -- SET 2" BRASS DISK IN A STD. MONUMENT WELL. SET TO COUNTY STD. AND TAGGED R.C.E. 12034.
  - (R) - RADIAL, Δ - CENTRAL ANGLE, R - RADIUS, L - LENGTH OF CURVE, P.U.E. - PUBLIC UTILITY EASEMENT, W.L.E. - WATER LINE EASEMENT, P.D.E. - PRIVATE DRAINAGE EASEMENT, B.S.L. - BUILDING SETBACK LINE.
- THE RED BORDER INDICATES THE BOUNDARIES OF THE LAND SUBDIVIDED BY THIS MAP

PARCEL "Z" INCLUDES HAWKS BEARD AS A PRIVATE STREET, P.U.E., W.L.E., AND P.D.E.

ALL DISTANCES AND DIMENSIONS SHOWN HEREON ARE IN FEET AND DECIMALS THEREOF

NOTE: ALL CENTRAL ANGLES OF CURVES AND BEARINGS HAVE BEEN MEASURED TO THE NEAREST SECOND. WHERE MINUTES AND/OR SECONDS ARE NOT SHOWN, IT IS UNDERSTOOD THEY ARE ZERO (i.e., N 84° E = N 84° 00' 00" E).

**DATA**

①	Δ = 14°	R = 125'	L = 30.54'
②	Δ = 14°	R = 150'	L = 36.65'
③	Δ = 14°	R = 175'	L = 42.76'
④	Δ = 16° 36' 58"	R = 115'	L = 33.35'
⑤	Δ = 2° 02' 25"	R = 395'	L = 14.07'
⑥	Δ = 4° 30'	R = 420'	L = 32.99'
⑦	N 47° W	23.00'	
⑧	Δ = 8° 30'	R = 360'	L = 53.41'
⑨	Δ = 10° 30'	R = 320'	L = 58.64'
⑩	Δ = 58° 05' 21"	R = 36.47'	
⑪	Δ = 7° 05' 27"	R = 250'	L = 30.94'
⑫	Δ = 78° 32' 17"	R = 30'	L = 41.12'

- BUILDING ENVELOPE
- LEACHFIELD AREAS

IV-45

**TRACT No. 612  
PHASE IV  
THE GEORGE RAUCH**

BEING A SUBDIVISION OF A PORTION OF THE LANDS OF DAMSTRAAT INC., A CALIFORNIA GENERAL PARTNERSHIP, (SONOMA COUNTY RECORDERS DOCUMENT NO. 88-28001) AS SHOWN ON THE RECORD OF SURVEY OF THE LANDS OF DAMSTRAAT INVESTORS, FILED IN 326 MAPS 32 & 33, ALSO BEING A PORTION OF THE PETALUMA RANCHO, SONOMA COUNTY, CALIFORNIA

BEING A PORTION OF A.P. No. 142-200-07

**OBERKAMPER & ASSOCIATES  
CIVIL ENGINEERS, INC.**  
SANTA ROSA, CALIFORNIA

SCALE: 1" = 100'

SHEET 4 OF 7