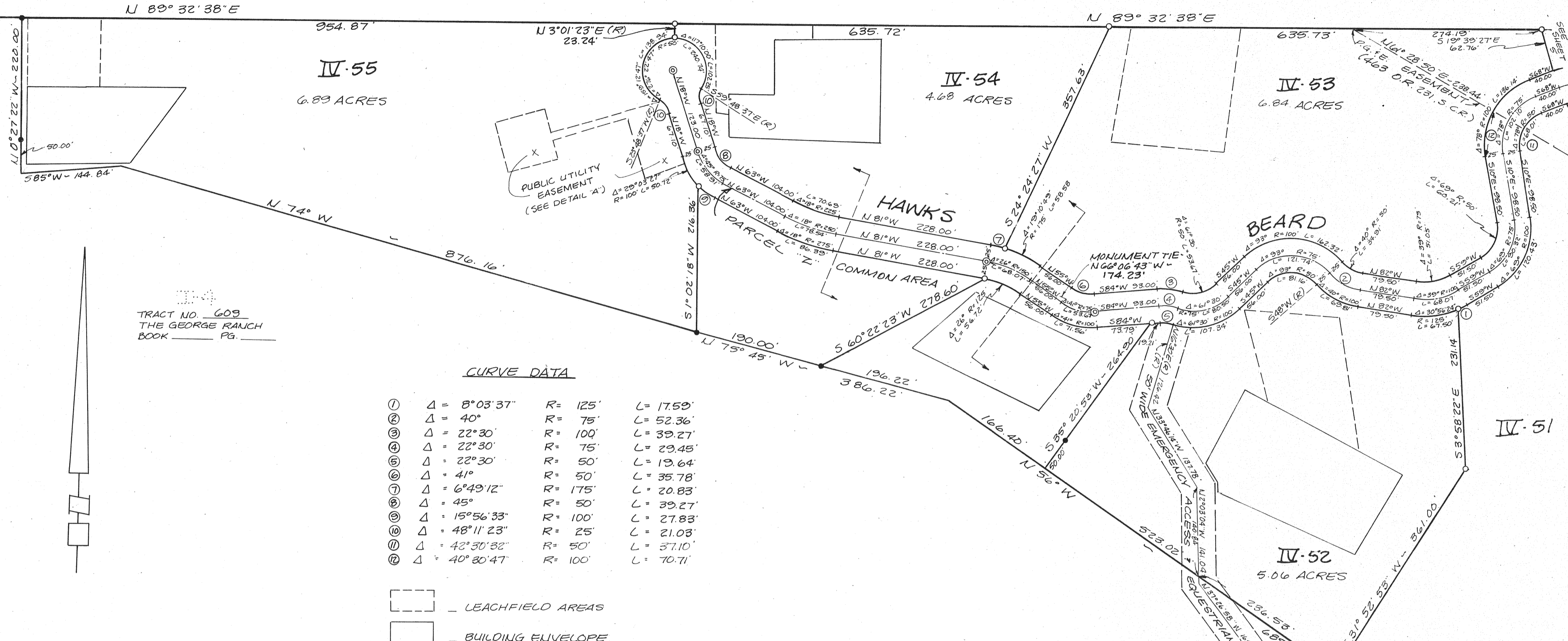


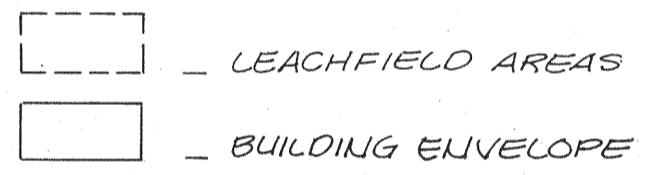
DIAMOND "A" RANCH ESTATES (1823 O.R. 573 AND 88 MAPS 25)



TRACT NO. 609
THE GEORGE RANCH
BOOK _____ PG. _____

CURVE DATA

①	Δ = 8°03'37"	R = 125'	L = 17.59'
②	Δ = 40°	R = 75'	L = 52.36'
③	Δ = 22°30'	R = 100'	L = 39.27'
④	Δ = 22°30'	R = 75'	L = 29.45'
⑤	Δ = 22°30'	R = 50'	L = 19.64'
⑥	Δ = 41°	R = 50'	L = 35.78'
⑦	Δ = 6°49'12"	R = 175'	L = 20.83'
⑧	Δ = 45°	R = 50'	L = 39.27'
⑨	Δ = 15°56'33"	R = 100'	L = 27.83'
⑩	Δ = 48°11'23"	R = 25'	L = 21.03'
⑪	Δ = 42°30'32"	R = 50'	L = 37.10'
⑫	Δ = 40°30'47"	R = 100'	L = 70.71'



LEGEND

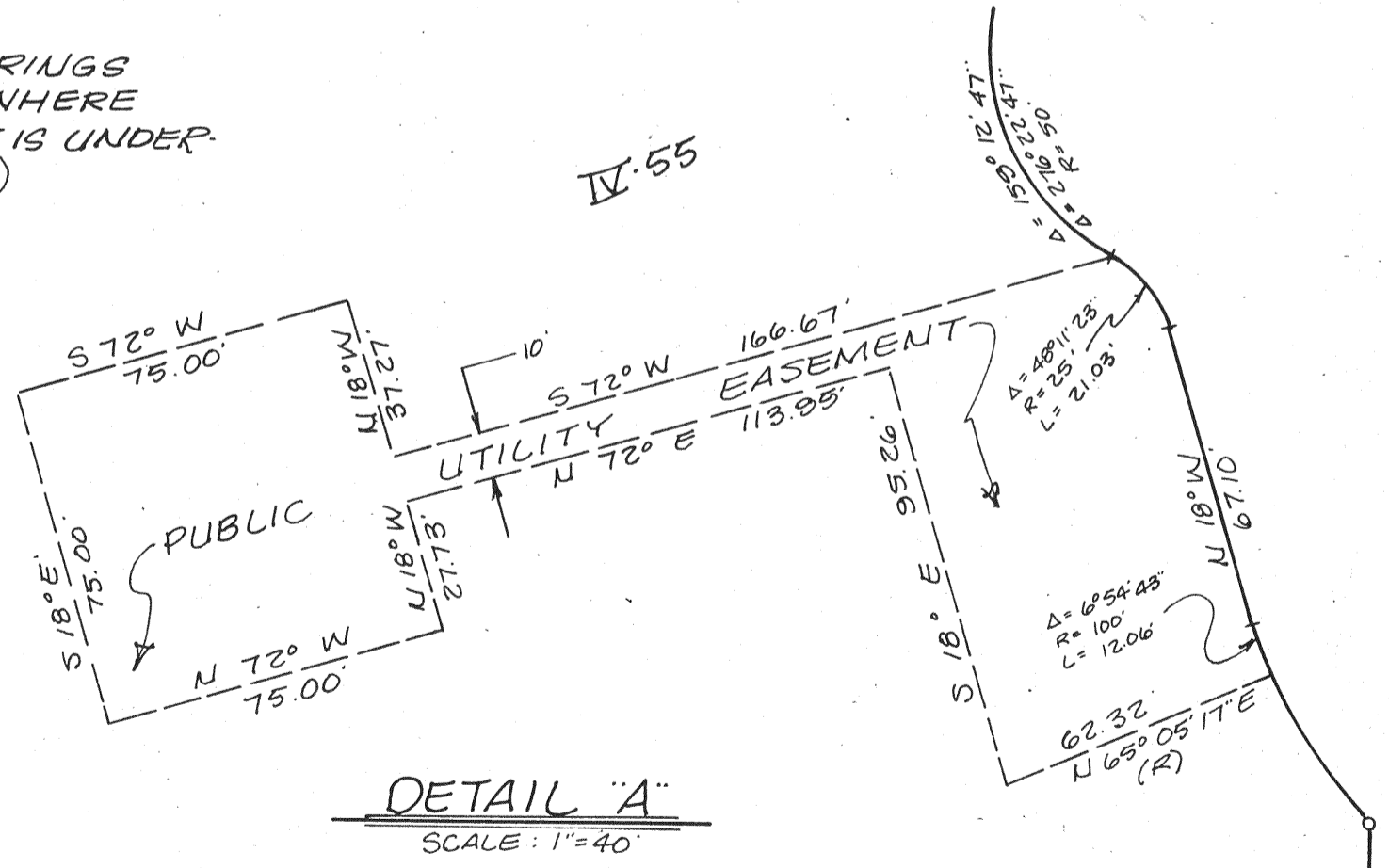
NOTE: ALL CENTRAL ANGLES OF CURVES AND BEARINGS HAVE BEEN MEASURED TO THE NEAREST SECOND. WHERE MINUTES AND/OR SECONDS ARE NOT SHOWN, IT IS UNDERSTOOD THEY ARE ZERO (i.e., N84°E = N84°00'00"E)

- SET 3/4" IRON PIPE R.C.E. 12094
 - FOUND 3/4" IRON PIPE R.C.E. 12094 (UNLESS OTHERWISE NOTED)
 - ⊙ SET 2" BRASS DISK IN A STD. MONUMENT WELL SET TO COUNTY STANDARD AND TAGGED R.C.E. 12094
- B.S.L. - BUILDING SETBACK LINE
- (R)-RADIAL; Δ-CENTRAL ANGLE; R-RADIUS
L-LENGTH OF CURVE; P.U.E.-PUBLIC UTILITY EASEMENT; W.L.E.-WATER LINE EASEMENT; P.D.E.-PRIVATE DRAINAGE EASEMENT

THE RED BORDER INDICATES THE BOUNDARIES OF THE LAND SUBDIVIDED BY THIS MAP.

PARCEL "Z" INCLUDES HAWK'S BEARD AS A PRIVATE STREET, P.U.E., W.L.E., AND P.D.E.

ALL DISTANCES AND DIMENSIONS SHOWN HEREON ARE IN FEET AND DECIMALS THEREOF.



TRACT No. 612
PHASE II
THE GEORGE RANCH

BEING A SUBDIVISION OF A PORTION OF THE LANDS OF DAMSTRAAT IUC., A CALIFORNIA GENERAL PARTNERSHIP (SONOMA COUNTY RECORDERS DOCUMENT NO. 82-28001 AS SHOWN ON THE RECORD OF SURVEY OF THE LANDS OF DAMSTRAAT INVESTORS, FILED IN 326 MAPS 32 & 33, ALSO BEING A PORTION OF THE PETALUMA RANCHO, SONOMA COUNTY, CALIFORNIA BEING A PORTION OF A.P. No. 142-200-07

**OBERKAMPER & ASSOCIATES
CIVIL ENGINEERS, INC.**
SANTA ROSA, CALIFORNIA

SCALE: 1" = 100'